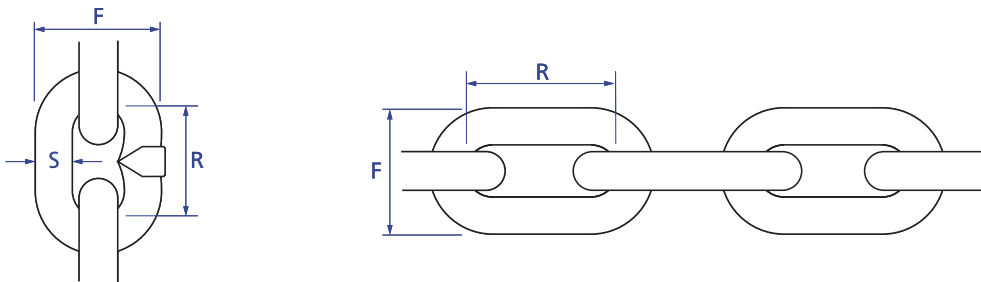


Hardware Chain

Hardware chain is untested and of commercial quality. It should not be used for suspension, lifting applications, or other purposes subject to control by statutory authorities/requirements.

Should approved lifting chain and components be required for your application, please refer to Section 2 of this catalogue – Grade 80 Alloy Lifting Chain and Fittings.

See also PWB Australian Manufactured Grade L Short Link Chain which meets AS2321 and has a design factor of 5:1 and 4:1 for certain applications.



Regular Link Mild Steel Hardware Chain

P/N Self Colour	P/N Galvanised	P/N Zinc Plated	Size	S (mm)	R (mm)	F (mm)
0802	0792	0789	3mm	3.15	15.7	13.1
0803	0793	0790	4mm	4	18.6	16
0804	0794	0791	5mm	5	22	19.4
0805	0795	n/a	6mm	6.3	26.1	23.5
0806	0796	n/a	8mm	8	32.2	29.5
0807	0797	n/a	10mm	10	39.1	36.2
0808	0798	n/a	13mm	13	49.1	46.1
0809	0799	n/a	16mm	16	59.6	56.5
0810	0800	n/a	20mm	20	73.3	70
0811	0801	n/a	24mm	24	87	83.6

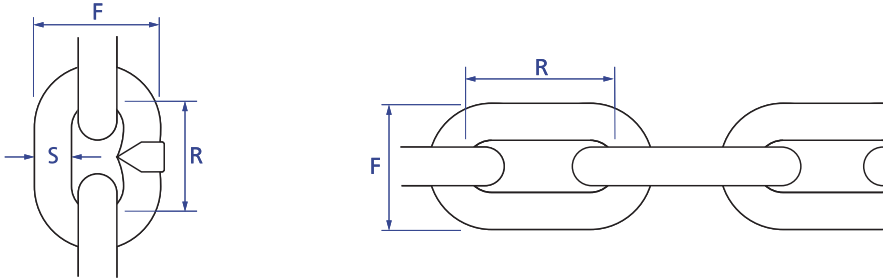
Long Link Mild Steel Hardware Chain

P/N Self Colour	P/N Galvanised	Size	S (mm)	R (mm)	F (mm)
0818	0812	3mm	3	23.2	15.4
0819	0813	4mm	3.8	26.8	8.4
0820	0814	5mm	5	29.3	21.8
0821	0815	6mm	6.3	34.5	26.1
0822	0816	8mm	8	41.2	31.9
0823	0817	10mm	10	49	38.7

Proof Coil Chain

A general purpose chain - Not suitable for industrial lifting applications.

The Maximum Working Load (MWL) shown is indicative and only to be used as a guide for the intended application.



Proof Coil Regular Link Chain

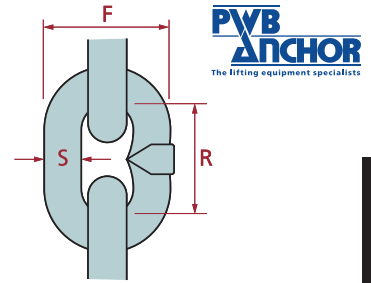
P/N Self Colour	P/N Galvanised	S (mm)	MWL (T)	S (mm)	R (mm)	F (mm)
0824	0834	3	0.06	3	16.6	13.1
0825	0835	4	0.11	3.8	19.6	15.8
0826	0836	5	0.19	4.75	23.2	19.1
0827	0837	6	0.32	6	28	24
0828	0838	8	0.53	7.6	35.8	29.2
0829	0839	10	0.86	9.5	43.4	35.5
0830	0840	13	1.5	12	51.7	44.5
0831	0841	16	2.31	16	59.6	57.3
0832	0842	20	3.67	20	73.3	71
0833	0843	24	5.34	24	87	84.8

Proof Coil Long Link Chain

P/N Self Colour	P/N Galvanised	S (mm)	MWL (T)	S (mm)	R (mm)	F (mm)
0844	0850	3	0.05	3	23.2	15.4
0845	0851	4	0.09	3.8	26.8	18.4
0846	0852	5	0.15	4.75	29.8	21.5
0847	0853	6	0.26	6	36.2	26
0848	0854	8	0.46	7.6	43.5	31
0849	0855	10	0.75	9.5	53.1	39

Grade L Chain - Australian Made

Manufactured in Australia, in a short link configuration meeting the requirements of Australian Standard AS2321, PWB Anchor Grade L Chain is the highest quality lower tensile steel available for lifting purposes with a Design Factor of 5:1. PWB Anchor Grade L Chain is also recommended for use in Fathom Chain and mooring applications and is now available with an increased Maximum Working Load (MWL) based on Design Factor of 4:1.



P/N	P/N	Chain size	WLL	MWL	S (mm)	R (mm)	F (mm)	Marking
Self Colour	Galvanised							
0866	0861	6	0.4	0.5	6.3	18.8	21.6	PWB-L
0867	0862	8	0.64	0.8	8	23.8	27	PWB-L
0868	0863	10	1	1.26	10	29.8	34.3	PWB-L
0869	0864	13	1.7	2.1	12.7	38	43	PWB-L
0870	0865	16	2.58	3.2	16	47.8	54.9	PWB-L
TBA	TBA	20	4.03	5	20	59.2	68.5	PWB-L
TBA	TBA	22	5.06	6.3	22	64.9	77	PWB-L

Anchor Fathom Chains

Manufactured from Grade L Chain with additional end link fittings, PWB Anchor Fathom Chains are supplied in a hot dip galvanised finish for added durability. Available in varied fathom lengths for use on appropriate sized fishing or leisure craft.

Chain size	MWL	S (mm)	R (mm)	F (mm)
10	1.26	12.0	51.7	45.0
13	2.10	16.0	59.0	57.3
16	3.20	20.0	73.0	71.0
20	5.00	24.0	87.0	84.8
22	6.30	29.0	112.0	110.0

Fathom Chains are NOT CERTIFIED FOR INDUSTRIAL LIFTING.

The MWL (Maximum Working Load) stated for Grade L and Fathom Chains based on a Design Factor of 4:1 is for guidance in the selection of a chain with sufficient strength for use in mooring or marine applications.

The WLL (Working Load Limit) stated for Grade L Chain is rated for general conditions of use to group classification of crane mechanisms of M3 as specified in AS1418.1, and in accordance with AS2321 for industrial lifting applications.

For other than general conditions of use the WLL shall be adjusted to conform to the group classification of crane mechanisms as specified in AS1418.1 for the conditions of use that apply.

Dimensions and masses subject to commercial tolerances and design changes without notice.

Grade L Chain - Imported

Batch Tested only

P/N	P/N	Chain size	S (mm)	R (mm)	F (mm)
Self Colour	Galvanised				
0866i	0861i	6	6.3	18.8	21.6
0867i	0862i	8	8	23.8	27
0868i	0863i	10	10	29.8	34.3



Grade P Chain - Australian Made

WWL information available on request

P/N

Galvanised	Chain size
0878	10mm
0879	13mm
0880	16mm



Trailer Safety Chain S/C

Manufactured in Australia to the requirements of Australian Standard AS 4177.4

Trailer safety Chain - A chain attached between the drawbar and the towbar for the purpose of retaining connection between the towing vehicle and the trailer in the event of coupling failure.

P/N	P/N	Chain size	Aggregate Trailer Mass(kg) max
Self Colour	Galvanised		
0932	0934	8mm	1600
0933	0935	10mm	2500
3726	0935-13	13mm	3500

Security Chain

P/N	Size
0948	11mm Boron with PVC sleeve
0949	11mm Boron

Security Chain Hardened Alloy Steel PVC Cover

P/N	Size
1559	11x1800MM
1560	11x1200MM

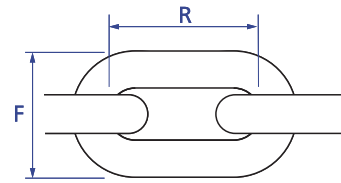
Stainless Steel Chain - Untested - Not for lifting applications

Stainless Steel Chain Regular Link Untested G304

P/N	Chain size	S (mm)	R (mm)	F (mm)
TBA	3mm	3	15.6	13.2
TBA	4mm	4	18.7	16
0954G304	6mm	6	25.7	23.6
0955G304	8mm	8	32	29.7
0956G304	10mm	10	38.9	36.3
TBA	12mm	12	45.9	44

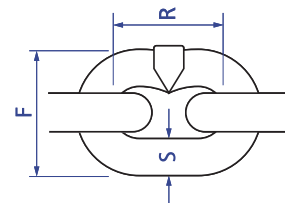
Stainless Steel Chain Regular Link Untested G316

P/N	Chain size	S (mm)	R (mm)	F (mm)
0950	2mm	2	12	7.5
0951	3mm	3	15.6	13.2
0952	4mm	4	18.7	16
0953	5mm	5	22	19.4
0954	6mm	6	25.7	23.6
0955	8mm	8	32	29.7
0956	10mm	10	38.9	36.3
0957	12mm	12	45.9	44
TBA	16mm	16	59.6	56.5



Stainless Steel Chain Short Link Untested G316

P/N	Chain size	S (mm)	R (mm)	F (mm)
2217	6mm	6	18.6	21
0955-SL	8mm	8	24	27
TBA	10mm	10	29.2	34.3



Stainless Steel RATED Chain G316 - Grade 50

Suitable for Lifting applications - Safety factor 5:1

Size	R (mm)	F (mm)	WLL (kg)	Breaking force (kN)
5mm	15	18.5	500	20
6mm	18	22.2	750	30
7mm	21	25.9	1000	40
8mm	24	29.6	1250	50
10mm	30	37	2000	80
13mm	39	48.1	3200	125
16mm	48	59.2	5000	200
18mm	54	64.8	6300	250

Note: For Stainless Steel lifting slings and rated stainless steel fittings to suit, refer to Stainless Steel Section 1, Page 38.

Plastic Chain

Other colours available on request

P/N	Size	Colour
0887	3mmx50m	White
0888	6mmx40m	White
0889	8mmx35m	White
0890	3mmx50m	Yellow
0891	6mmx40m	Yellow
0892	8mmx35m	Yellow
0893	3mmx50m	Black
0894	6mmx40m	Black
0895	8mmx35m	Black
0896	3mmx50m	Red
0897	6mmx40m	Red
0898	8mmx35m	Red
0899	6mm	Red/White
0900	8mm	Red/White
0901	6mm	Yellow/Black
0902	8mm	Yellow/Black



Ball Chain Brass N/P

Other sizes available on request

P/N Chain	P/N Connector	P/N End Clip	Size
0881	884	2585	2.4mm
0882	885	2587	3.2mm
0883	886	2588	4mm
2405	2561	2586	6mm
2406	3754	TBA	10mm



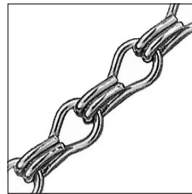
Single Jack Chain

P/N	Size	Finish
0903	1.6mmx90m	Z/P
0904	2mmx60m	Z/P
0905	2.4mmx45m	Z/P
0906	3.2mmx25m	Z/P
0907	1.6mmx90m	B/P
0908	2mmx60m	B/P
0909	2.4mmx45m	B/P
0910	3.2mmx25m	B/P



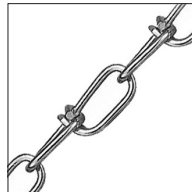
Double Jack Chain

P/N	Size	Finish
0923	1.6mm	Z/P
0924	2mm	Z/P
0925	2.5mm	Z/P
0926	3.2mm	Z/P
0927	1.6mm	B/P
0928	2mm	B/P
0929	2.5mm	B/P
0930	3.2mm	B/P



Coil Twist Chain Z/P

P/N	Size
0940	1.6mm
0941	2mm
0942	2.5mm
0943	3.15mm
0944	4mm



Utility Long Link Chain Z/P

P/N	Size
0911	3mmx45m
0912	4mmx30m
0913	5mmx20m



Curb Chain N/P

P/N	Size
0945	1.6mm
0946	2mm
0947	2.5mm
2342	3mm
2343	4mm



The chain shown in this section of our catalogue is representative of our most popular chain types. Various other ranges are available including decorative, mooring/anchor and more specialized types such as kiln and transmission chains. Please provide us details of your enquiry.

