

Townley Drop Forge specialises in the manufacture of eyebolts, eyenuts, turnbuckles, rigging screws, hooks & custom forgings for a wide variety of applications.

Townley Drop Forge is both NATA Accredited (Test Lab no. 13554) and AS/NZS ISO 9001 Certified.

Collared Lifting Eyebolts

Working Load Limit - WLLs are applicable when the stated load is applied along the vertical axis of the eyebolt.

Safe Working Load - SWLs are applicable when used for specific lifting configurations under different working conditions.

Safety Factor - Both metric & imperial eyebolts have a safety factor of 6:1.

All thread forms must be checked prior to installation.

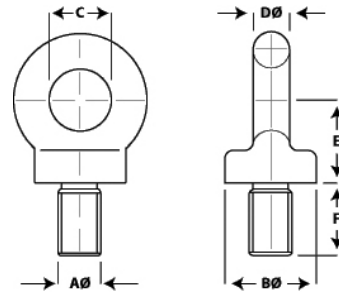
Thread Selection - Extreme care must be exercised in ensuring that an eyebolt's thread form & the thread form in the corresponding hole or nut is the same.

Collar & Face Seating - In order to achieve the WLLs shown, the collar face & the contacting face must be flat, smooth, & must be perpendicular to the threaded hole.

Eyebolt Maintenance - When eyebolts are reused, it is strongly recommended that they are critically examined periodically for wear on the thread form or for any bruising.

Correct Fitting of Eyebolt Pairs - When using eyebolts in pairs, it is essential that care be taken to properly align them. Eyebolts must not be forced into alignment as over stressing will reduce their safe working load.

Collared Lifting Eyebolts



Metric Coarse Thread

PN	Size	BØ	C	DØ	E	F	Axial WLL tonnes
1398	10mm	21	14	9	19	18	0.25
1399	12mm	28	19	11	24	23	0.4
1400	16mm	35	24	15	31	30	0.8
1401	20mm	42	29	16	35	40	1.6
1402	24mm	57	38	22	48	46	2.5
1403	30mm	71	48	28	65	50	4
1404	36mm	86	55	33	73	66	6.3

Larger sizes available on request

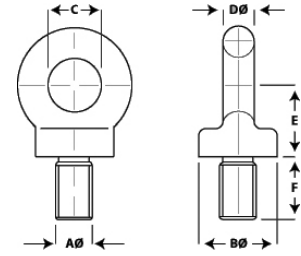
Items are batch tested only. For lifting applications an individual certificate of proof test must be supplied.

TOWNLEY
FORGING AUSTRALIAN QUALITY

We have the right product, at the right price, when you need it, on-time, every time

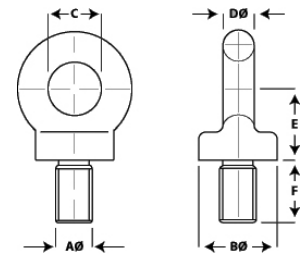


Collared Lifting Eyebolts



Metric Fine Pitch

TDF Part No.	Description	(t)Thread		Bø mm	C mm	Dø mm	E mm	F mm	net weight	
		Metric Aø	WLL							Pitch
EBMF12	12mm Metric Fine Eyebolt	M12	0.40	1.50	28	19	11	24	23	0.15
EBMF16	16mm Metric Fine Eyebolt	M16	0.80	1.50	35	24	15	31	30	0.28
EBMF20	20mm Metric Fine Eyebolt	M20	1.60	1.50	42	29	16	35	40	0.46
EBMF22	22mm Metric Fine Eyebolt	M22	2.00	1.50	50	33	20	41	41	0.85
EBMF24	24mm Metric Fine Eyebolt	M24	2.50	2.00	57	38	22	48	46	1.00
EBMF30	30mm Metric Fine Eyebolt	M30	4.00	2.00	71	48	28	65	50	2.10
EBMF33	33mm Metric Fine Eyebolt	M33	5.00	2.00	71	48	28	65	50	2.20
EBMF36	36mm Metric Fine Eyebolt	M36	6.30	2.00	86	55	33	73	66	3.70
EBMF39	39mm Metric Fine Eyebolt	M39	7.00	4.00	86	55	33	73	66	3.70
EBMF42	42mm Metric Fine Eyebolt	M42	8.00	4.50	102	66	40	90	77	6.30
EBMF48	48mm Metric Fine Eyebolt	M48	10.00	5.00	115	72	49	99	89	9.20
EBMF56	56mm Metric Fine Eyebolt	M56	15.00	5.50	143	95	56	124	111	19.5
EBMF64	64mm Metric Fine Eyebolt	M64	20.00	6.00	143	95	56	124	111	19.5
EBMF76	76mm Metric Fine Eyebolt	M76	30.00	6.00	163	106	66	140	125	29.0



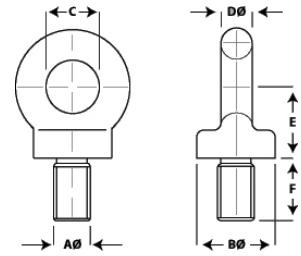
Imperial Thread UNC

TDF Part No.	Description	(t)Thread		Bø mm	C mm	Dø mm	E mm	F mm	net weight	
		Imperial Aø	WLL							Pitch
EBU375	3/8 Imperial UNC Eyebolt	3/8	0.25	16.00	21	14	9	19	18	0.06
EBU500	1/2 Imperial UNC Eyebolt	1/2	0.40	13.00	28	19	11	24	23	0.15
EBU625	5/8 Imperial UNC Eyebolt	5/8	0.80	11.00	35	24	15	31	30	0.28
EBU750	3/4 Imperial UNC Eyebolt	3/4	1.60	10.00	42	29	16	35	40	0.46
EBU875	7/8 Imperial UNC Eyebolt	7/8	2.00	9.00	50	33	20	41	41	0.85
EBU1000	1" Imperial UNC Eyebolt	1	2.50	8.00	57	38	22	48	46	1.10
EBU1125	1 1/8 Imperial UNC Eyebolt	1 1/8	4.00	7.00	71	48	28	65	50	2.10
EBU1250	1 1/4 Imperial UNC Eyebolt	1 1/4	5.00	7.00	71	48	28	65	50	2.20
EBU1500	1 1/2 Imperial UNC Eyebolt	1 1/2	7.00	6.00	86	55	33	73	66	3.70
EBU1750	1 3/4 Imperial UNC Eyebolt	1 3/4	8.00	5.00	102	66	40	90	77	6.30
EBU2000	2" Imperial UNC Eyebolt	2	10.00	4.50	115	72	49	99	89	9.50
EBU2500	2 1/2 Imperial UNC Eyebolt	2 1/2	20.00	4.00	143	95	56	124	111	19.50
EBU3000	3" Imperial UNC Eyebolt	3	30.00	4.00	163	106	66	140	125	29.0

Items are batch tested only. For lifting applications an individual certificate of proof test must be supplied.

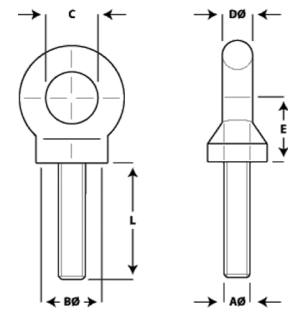


Collared Lifting Eyebolts



Lifting Eye Bolt BSW

PN	Size	BØ	C	DØ	E	F	Axial WLL tonnes
1422	3/8"	21	14	9	19	18	0.25
1423	1/2"	28	19	11	24	23	0.4
1424	5/8"	35	24	15	31	30	0.8
1425	3/4"	42	29	16	35	40	1.6
1426	1	57	38	22	48	46	2.5
1427	1 1/4	71	48	28	65	50	4
1428	1 1/2	86	55	33	73	66	6.3



Collared Lifting Eyebolts - Eyebolts Long Shank

Description	(t)Thread		C mm	DØ mm	E mm	net Lmm	
	Imperial AØ	Metric AØ					BØ
	3/8"	M10	28	24	11	25	As Required
	1/2"	M12	28	24	11	25	As Required
	5/8"	M16	34	28	16	40	As Required
	3/4"	M20	44	32	20	44	As Required
	7/8"	M22	50	33	20	44	As Required
	1"	M24	57	38	22	51	As Required
	1 1/4"	M30	71	48	28	65	As Required
	1 1/4"	M33	71	48	28	65	As Required
	1 1/2"	M36	86	55	33	73	As Required
	1 1/2"	M39	86	55	33	73	As Required
	1 3/4"	M42	102	66	40	90	As Required
	2"	M48	115	72	49	99	As Required
	2 1/4"	M56	143	95	56	124	As Required
	2 1/2"	M64	143	95	56	124	As Required
	3"	M76	163	106	66	140	As Required

Items are batch tested only. For lifting applications an individual certificate of proof test must be supplied.



We have the right product, at the right price, when you need it, on-time, every time

Collared Lifting Eyebolts-Load Chart

Eyebolt - Working Loads

The following working loads are derived from AS 2317 - 1998, which is used to determine the safe working load when used in the correct manner.

Imperial Nominal	Metric Nominal	Axial	Trunion	Perpendicular	0° - 30°	31° - 60°	61° - 90°
		WLL tonnes	Type Mounting WLL tonnes	Type Mounting WLL tonnes	WLL tonnes	WLL tonnes	WLL tonnes
3/8"	M10	0.25	0.06	0.12	0.31	0.20	0.12
1/2"	M12	0.40	0.10	0.20	0.50	0.32	0.20
1/2"	M14	0.40	0.10	0.20	0.50	0.32	0.20
5/8"	M16	0.80	0.20	0.40	1.00	0.64	0.40
5/8"	M18	0.80	0.20	0.40	1.00	0.64	0.40
3/4"	M20	1.60	0.40	0.80	2.00	1.28	0.80
7/8"	M22	2.00	0.50	1.00	2.50	1.60	1.00
1"	M24	2.50	0.62	1.25	3.10	2.00	1.25
1.1/8"	M30	4.00	1.00	2.00	5.00	3.20	2.00
1.1/4"	M33	5.00	1.25	2.50	6.30	4.00	2.50
1.1/2"	M36	6.30	1.57	3.10	7.90	5.00	3.10
1.1/2"	M39	7.00	1.75	3.50	8.80	5.60	3.50
1.3/4"	M42	8.00	2.00	4.00	10.00	6.40	4.00
2"	M48	10.00	2.50	5.00	12.60	8.00	5.00
2.1/2"	M56	15.00	3.70	7.50	18.90	12.00	7.50
2.1/2"	M64	20.00	5.00	10.00	25.00	16.00	10.00
3"	M72	25.00	6.20	12.50	31.00	20.00	12.50
3"	M76	30.00	7.50	15.00	37.00	24.00	15.00

Items are batch tested only. For lifting applications an individual certificate of proof test must be supplied.

Turnbuckles

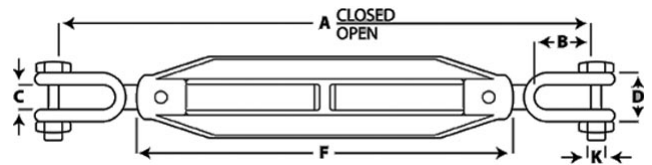
Turnbuckles

Heavy duty turnbuckles ranges from M10 to M24 nominal size bodies. End fittings and complete assemblies are produced to meet the performance requirements of AS 2319 - 2001. The commercial range is manufactured to the same exacting standards and are subject to the full process control of ISO 9001. The Imperial thread range conforms to the load requirements of AS 2319 - 2001.

Grade L Turnbuckles - Units supplied are commercial grade turnbuckles and tested to the Grade L requirements as per AS 2319 - 2001. Certification for Grade L products are issued with goods upon delivery.

Grade P Turnbuckles - End fittings for this range are manufactured using a different grade material, followed by the subsequent heat treatment to meet the Grade P working load requirements as per AS 2319 - 2001. Certification of Grade P products are issued with goods upon delivery.

Grade S Turnbuckles - Available in a Clevis & Clevis or Clevis & Eye configuration, this product uses heat treated, high grade micro alloys. This lighter, stronger, and more compact product meets the working load requirements of Grade S as per AS 2319 - 2001. Certification of Grade S products are issued with goods upon delivery.



Clevis & Clevis Turnbuckles Galvanised - Grades L, P & S

TDF Part No	Description	Nominal size	WLL(f)	A Closed	A Open	Bmm	Cmm	Dmm	Fmm	Kmm	Grade	weight
TBCCL10	10mm Grade L Clevis & Clevis Turnbuckle	M10	0.30	240	350	30	14	30	150	10	L	0.5
TBCCL12	12mm Grade L Clevis & Clevis Turnbuckle	M12	0.50	335	470	36	15	35	190.5	10	L	0.84
TBCCL16	16mm Grade L Clevis & Clevis Turnbuckle	M16	0.75	355	490	45	20	40	204	12	L	1.6
TBCCL20	20mm Grade L Clevis & Clevis Turnbuckle	M20	1.25	440	520	46	22	46	216.5	16	L	2.8
TBCCL24	24mm Grade L Clevis & Clevis Turnbuckle	M24	2.50	450	585	59	30	58	232	20	L	4.57
TBCC10P	10mm Grade P Clevis & Clevis Turnbuckle	M10	0.60	240	350	30	14	30	150	10	P	0.5
TBCC12P	12mm Grade P Clevis & Clevis Turnbuckle	M12	1.00	335	470	36	15	35	190.5	10	P	0.84
TBCC16P	16mm Grade P Clevis & Clevis Turnbuckle	M16	1.60	355	490	45	20	40	204	12	P	1.6
TBCC20P	20mm Grade P Clevis & Clevis Turnbuckle	M20	2.50	440	520	46	22	46	216.5	16	P	2.8
TBCC24P	24mm Grade P Clevis & Clevis Turnbuckle	M24	4.00	450	585	59	30	58	232	20	P	4.57
TBCC10S	10mm Grade S Clevis & Clevis Turnbuckle	M10	0.80	240	350	30	14	30	150	10	S	0.5
TBCC12S	12mm Grade S Clevis & Clevis Turnbuckle	M12	1.20	335	470	36	15	35	190.5	10	S	0.84
TBCC16S	16mm Grade S Clevis & Clevis Turnbuckle	M16	2.00	355	490	45	20	40	204	12	S	1.6
TBCC20S	20mm Grade S Clevis & Clevis Turnbuckle	M20	3.20	440	520	46	22	46	216.5	16	S	2.8
TBCC24S	24mm Grade S Clevis & Clevis Turnbuckle	M24	5.00	450	585	59	30	58	232	20	S	4.57
TBCCL1250	1 1/4" Grade L Clevis & Clevis Turnbuckle	1 1/4	5.00	520	670	70	38	N/A	255	25	L	7.94
TBCCL1500	1 1/2" Grade L Clevis & Clevis Turnbuckle	1 1/2	6.00	550	470	70	48	N/A	275	32	L	13.47
TBCC1250P	1 1/4" Grade P Clevis & Clevis Turnbuckle	1 1/4	8.00	520	670	70	38	N/A	255	25	P	7.94
TBCC1500P	1 1/2" Grade P Clevis & Clevis Turnbuckle	1 1/2	10.00	550	470	70	48	N/A	275	32	P	13.47
TBCC1250S	1 1/4" Grade S Clevis & Clevis Turnbuckle	1 1/4	10.00	520	670	70	38	N/A	255	25	S	7.94
TBCC1500S	1 1/2" Grade S Clevis & Clevis Turnbuckle	1 1/2	12.00	550	470	70	48	N/A	275	32	S	13.47

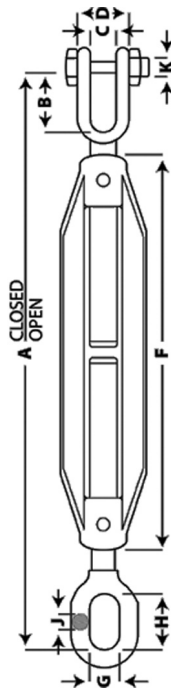
Items are batch tested only. For lifting applications an individual certificate of proof test must be supplied.



We have the right product, at the right price, when you need it, on-time, every time



Turnbuckles



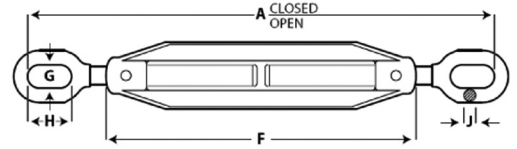
Clevis & Eye Turnbuckles Galvanised - Grades L, P & S

TDF Part No	Description	Nominal size	WLL(f)	A		Bmm	Cmm	Dmm	Fmm	Gmm	Hmm	Jmm	Kmm	Grade	net weight
				Closed	Open										
TBCEL10	10mm Grade L Clevis & Eye Turnbuckle	M10	0.30	235.00	340	30	14	30	150	11	21	7	10	L	0.3
TBCEL12	12mm Grade L Clevis & Eye Turnbuckle	M12	0.50	330.00	470	36	15	35	190.5	15	30	9	10	L	0.7
TBCEL16	16mm Grade L Clevis & Eye Turnbuckle	M16	0.75	355.00	490	45	20	40	204	17	36	12	12	L	1.5
TBCEL20	20mm Grade L Clevis & Eye Turnbuckle	M20	1.25	390.00	520	55	22	46	215.5	21	42	14	16	L	2.5
TBCEL24	24mm Grade L Clevis & Eye Turnbuckle	M24	2.50	445.00	580	69	30	58	232	25	51	17	20	L	4.00
TBCE10P	10mm Grade P Clevis & Eye Turnbuckle	M10	0.60	235.00	340	30	14	30	150	11	21	7	10	P	0.3
TBCE12P	12mm Grade P Clevis & Eye Turnbuckle	M12	1.00	330.00	470	36	15	35	190.5	15	30	9	10	P	0.7
TBCE16P	16mm Grade P Clevis & Eye Turnbuckle	M16	1.60	355.00	490	45	20	40	204	17	36	12	12	P	1.5
TBCE20P	20mm Grade P Clevis & Eye Turnbuckle	M20	2.50	390.00	520	55	22	46	215.5	21	42	14	16	P	2.5
TBCE24P	24mm Grade P Clevis & Eye Turnbuckle	M24	4.00	445.00	580	69	30	58	232	25	51	17	20	P	4.00
TBCE10S	10mm Grade S Clevis & Eye Turnbuckle	M10	0.80	235.00	340	30	14	30	150	11	21	7	10	S	0.3
TBCE12S	12mm Grade S Clevis & Eye Turnbuckle	M12	1.20	330.00	470	36	15	35	190.5	15	30	9	10	S	0.7
TBCE16S	16mm Grade S Clevis & Eye Turnbuckle	M16	2.00	355.00	490	45	20	40	204	17	36	12	12	S	1.5
TBCE20S	20mm Grade S Clevis & Eye Turnbuckle	M20	3.20	390.00	520	55	22	46	215.5	21	42	14	16	S	2.5
TBCE24S	24mm Grade S Clevis & Eye Turnbuckle	M24	5.00	445.00	580	69	30	58	232	25	51	17	20	S	4.00
TBCEL1250	1 1/4" Grade L Clevis & Eye Turnbuckle	1 1/4	5.00	525.00	690	70	38	N/A	255	33	67	22	25	L	7.11
TBCEL1500	1 1/2" Grade L Clevis & Eye Turnbuckle	1 1/2	6.00	570.00	740	70	48	N/A	275	38	72	25	32	L	11.62
TBCE1250P	1 1/4" Grade P Clevis & Eye Turnbuckle	1 1/4	8.00	525.00	690	70	38	N/A	255	33	67	22	25	P	7.11
TBCE1500P	1 1/2" Grade P Clevis & Eye Turnbuckle	1 1/2	10.00	570.00	740	70	48	N/A	275	38	72	25	32	P	11.62
TBCE1250S	1 1/4" Grade S Clevis & Eye Turnbuckle	1 1/4	10.00	525.00	690	70	38	N/A	255	33	67	22	25	S	7.11
TBCE1500S	1 1/2" Grade S Clevis & Eye Turnbuckle	1 1/2	12.00	570.00	740	70	48	N/A	275	38	72	25	32	S	11.62

Items are batch tested only. For lifting applications an individual certificate of proof test must be supplied.



Turnbuckles



Eye & Eye Turnbuckles Galvanised - Grades L, P & S

TDF Part No	Description	Nominal size	WLL(f)	A		Fmm	Gmm	Hmm	Jmm	Grade	weight
				Closed	Open						
TBEEL10	10mm Grade L Eye & Eye Turnbuckle	M10	0.30	230.00	335	150	11	21	7	L	0.35
TBEEL12	12mm Grade L Eye & Eye Turnbuckle	M12	0.50	330.00	470	190.5	15	30	9	L	0.67
TBEEL16	16mm Grade L Eye & Eye Turnbuckle	M16	0.75	350.00	485	204	17	36	12	L	1.5
TBEEL20	20mm Grade L Eye & Eye Turnbuckle	M20	1.25	385.00	515	216.5	21	42	14	L	2.16
TBEEL24	24mm Grade L Eye & Eye Turnbuckle	M24	2.50	440.00	570	232	25	51	17	L	3.5
TBEE10P	10mm Grade P Eye & Eye Turnbuckle	M10	0.60	230.00	335	150	11	21	7	P	0.35
TBEE12P	12mm Grade P Eye & Eye Turnbuckle	M12	1.00	330.00	470	190.5	15	30	9	P	0.67
TBEE16P	16mm Grade P Eye & Eye Turnbuckle	M16	1.60	350.00	485	204	17	36	12	P	1.5
TBEE20P	20mm Grade P Eye & Eye Turnbuckle	M20	2.50	385.00	515	216.5	21	42	14	P	2.16
TBEE24P	24mm Grade P Eye & Eye Turnbuckle	M24	4.00	440.00	570	232	25	51	17	P	3.5

Items are batch tested only. For lifting applications an individual certificate of proof test must be supplied.



We have the right product, at the right price, when you need it, on-time, every time



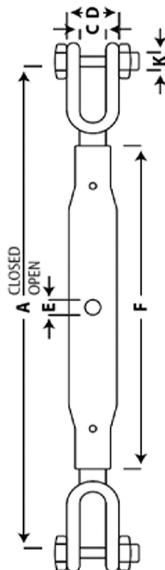
Rigging Screws

Rigging Screws

Heavy duty rigging screws range from M10 to M24 nominal size barrels. End fittings and complete assemblies are produced by Townley Drop Forge to meet the performance requirements of AS 2319 - 2001. The commercial range is manufactured to the same exacting standards and are subject to the full process control of ISO 9001. The Imperial thread range conforms to the load requirements of AS 2319 - 2001.

Grade L Rigging Screws - Units supplied are commercial grade rigging screws and tested to the Grade L requirements as per AS 2319 - 2001. Certification of Grade L products are issued with goods upon delivery.

Grade P Rigging Screws - End fittings for this range are manufactured using a different grade material, followed by the subsequent heat treatment to meet the Grade P working load requirements as per AS 2319 - 2001. Certification of Grade P products are issued with good upon delivery.



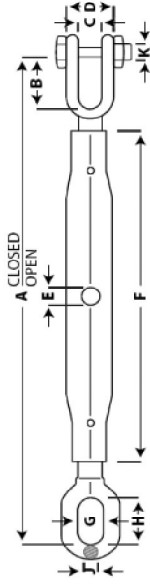
Clevis & Clevis Rigging Screws - Galvanised - Grades L, P & S

TDF Part No	Description	Nominal size	WLL(f)	A		Bmm	Cmm	Dmm	Emm	Fmm	Kmm	Grade	net weight
				Closed	Open								
RSCCL10	10mm Grade L Clevis & Clevis Rigging Screw	M10	0.30	265.00	395	30	14	30	8.5	180	10	L	0.49
RSCCL12	12mm Grade L Clevis & Clevis Rigging Screw	M12	0.50	340.00	525.3	6	15	35	8.5	230	10	L	0.97
RSCCL16	16mm Grade L Clevis & Clevis Rigging Screw	M16	0.75	360.00	535	45	20	40	9	230	12	L	1.36
RSCCL20	20mm Grade L Clevis & Clevis Rigging Screw	M20	1.25	390.00	555	55	22	46	10.5	230	16	L	2.35
RSCCL24	24mm Grade L Clevis & Clevis Rigging Screw	M24	2.50	555.00	740	59	30	58	13	360	20	L	4.2
RSCCL10P	10mm Grade P Clevis & Clevis Rigging Screw	M10	0.50	265.00	395	30	14	30	8.5	180	10	P	0.49
RSCCL12P	12mm Grade P Clevis & Clevis Rigging Screw	M12	1.00	340.00	525	36	15	35	8.5	230	10	P	0.97
RSCCL16P	16mm Grade P Clevis & Clevis Rigging Screw	M16	1.60	360.00	535	45	20	40	9	230	12	P	1.36
RSCCL20P	20mm Grade P Clevis & Clevis Rigging Screw	M20	2.50	390.00	555	55	22	46	10.5	230	16	P	2.35
RSCCL24P	24mm Grade P Clevis & Clevis Rigging Screw	M24	4.00	555.00	740	59	30	58	13	360	20	P	4.2
RSCCL24S	24mm Grade S Clevis & Clevis Rigging Screw	M24	5.00	555.00	740	59	30	58	13	360	20	S	4.2
RSCCL1250	1 1/4" Grade L Clevis & Clevis Rigging Screw	1 1/4"	5.00	610.00	830	63	38	N/A	14	380	25	L	8.11
RSCCL1500	1 1/2" Grade L Clevis & Clevis Rigging Screw	1 1/2"	6.00	660.00	890	82	48	N/A	16	405	32	L	13.32
RSCCL1750	1 3/4" Grade L Clevis & Clevis Rigging Screw	1 3/4"	7.50	690.00	920	93	50	N/A	17	405	35	L	18.61
RSCCL2000	2" Grade L Clevis & Clevis Rigging Screw	2"	10.00	762.00	997	99	50	N/A	19	405	41	L	31.58
RSCCL2250	2 1/4" Grade L Clevis & Clevis Rigging Screw	2 1/4"	15.00	819.00	1029	115	60	N/A	22	405	47	L	32.00
RSCCL2500	2 1/2" Grade L Clevis & Clevis Rigging Screw	2 1/2"	20.00	838.00	1035	115	70	N/A	22	405	51	L	46.38

Items are batch tested only. For lifting applications an individual certificate of proof test must be supplied.



Rigging Screws



Clevis & Eye Rigging Screws Galvanised - Grades L, P & S

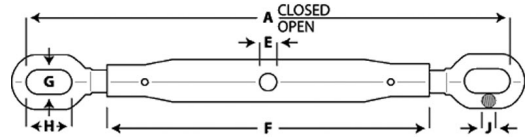
TDF Part No	Description	Nominal size	WLL(f)	A		Bmm	Cmm	Dmm	Emm	Fmm	Gmm	Hmm	Jmm	Kmm	Grade	net weight
				Closed	Open											
RSCEL10	10mm Grade L Clevis & Eye Rigging Screw	M10	0.30	260	385	30	14	30	8.5	180	11	21	7	10	L	0.41
RSCEL12	12mm Grade L Clevis & Eye Rigging Screw	M12	0.50	335	525	36	15	35	8.5	230	14	30	9	10	L	0.88
RSCEL16	16mm Grade L Clevis & Eye Rigging Screw	M16	0.75	355	535	45	20	40	9	230	17	36	12	12	L	1.23
RSCEL20	20mm Grade L Clevis & Eye Rigging Screw	M20	1.25	385	550	55	22	46	10.5	230	21	42	14	16	L	2.04
RSCEL24	24mm Grade L Clevis & Eye Rigging Screw	M24	2.50	555	735	59	30	58	13	360	25	51	17	20	L	3.78
RSCE10P	10mm Grade P Clevis & Eye Rigging Screw	M10	0.50	260	385	30	14	30	8.5	180	11	21	7	10	P	0.41
RSCE12P	12mm Grade P Clevis & Eye Rigging Screw	M12	1.00	335	525	36	15	35	8.5	230	14	30	9	10	P	0.88
RSCE16P	16mm Grade P Clevis & Eye Rigging Screw	M16	1.60	355	535	45	20	40	9	230	17	36	12	12	P	1.23
RSCE20P	20mm Grade P Clevis & Eye Rigging Screw	M20	2.50	385	550	55	22	46	10.5	230	21	42	14	16	P	2.04
RSCE24P	24mm Grade P Clevis & Eye Rigging Screw	M24	4.00	555	735	59	30	58	13	360	25	51	17	20	P	3.78
RSCE24S	24mm Grade S Clevis & Eye Rigging Screw	M24	5.00	555	735	59	30	58	13	360	25	51	17	20	S	3.78
RSCEL1250	1 1/4" Grade L Clevis & Eye Rigging Screw	1 1/4"	5.00	603	876	63	38	N/A	14	380	35	65	22	25	L	7.40
RSCEL1500	1 1/2" Grade L Clevis & Eye Rigging Screw	1 1/2"	6.00	673	952	82	48	N/A	16	405	38	75	25	32	L	11.01
RSCEL1750	1 3/4" Grade L Clevis & Eye Rigging Screw	1 3/4"	7.50	705	959	93	50	N/A	17	405	41	88	32	35	L	15.81
RSCEL2000	2" Grade L Clevis & Eye Rigging Screw	2"	10.00	743	978	99	50	N/A	19	405	44	102	38	41	L	26.78
RSCEL2250	2 1/4" Grade L Clevis & Eye Rigging Screw	2 1/4"	15.00	813	1029	115	60	N/A	22	405	60	130	41	47	L	30.00
RSCEL2500	2 1/2" Grade L Clevis & Eye Rigging Screw	2 1/2"	20.00	826	1029	115	70	N/A	22	405	60	130	47	51	L	40.38

Items are batch tested only. For lifting applications an individual certificate of proof test must be supplied.



We have the right product, at the right price, when you need it, on-time, every time

Rigging Screws



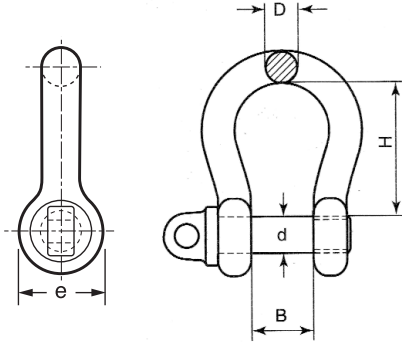
Eye & Eye Rigging Screws - Galvanised - Grades L, P & S

TDF Part No	Description	Nominal size	WLL(f)	A Closed	A Open	Emm	Fmm	Gmm	Hmm	Kmm	Grade	net weight
RSEEL10	10mm Grade L Eye & Eye Rigging Screw	M10	0.30	260.00	380	8.5	180	12	21	7	L	0.34
RSEEL12	12mm Grade L Eye & Eye Rigging Screw	M12	0.50	340.00	520	8.5	230	15	30	9	L	0.79
RSEEL16	16mm Grade L Eye & Eye Rigging Screw	M16	0.75	350.00	525	9	230	17	36	12	L	1.09
RSEEL20	20mm Grade L Eye & Eye Rigging Screw	M20	1.25	380.00	545	10.5	230	21	42	12	L	1.72
RSEEL24	24mm Grade L Eye & Eye Rigging Screw	M24	2.50	540.00	725	13	360	25	51	17	L	3.20
RSEE10P	10mm Grade P Eye & Eye Rigging Screw	M10	0.50	260.00	380	8.5	180	12	21	7	P	0.34
RSEE12P	12mm Grade P Eye & Eye Rigging Screw	M12	1.00	340.00	520	8.5	230	15	30	9	P	0.79
RSEE16P	16mm Grade P Eye & Eye Rigging Screw	M16	1.60	350.00	525	9	230	17	36	12	P	1.09
RSEE20P	20mm Grade P Eye & Eye Rigging Screw	M20	2.50	380.00	545	10.5	230	21	42	12	P	1.72
RSEE24P	24mm Grade P Eye & Eye Rigging Screw	M24	4.00	540.00	725	13	360	25	51	17	P	3.20
RSEE24S	24mm Grade S Eye & Eye Rigging Screw	M24	5.00	540.00	725	13	360	25	51	17	S	3.20
RSEEL1250	1 1/4" Grade L Eye & Eye Rigging Screw	1 1/4"	5.00	590.00	837	14	380	35	65	22	L	7.00
RSEEL1500	1 1/2" Grade L Eye & Eye Rigging Screw	1 1/2"	6.00	648.00	927	16	405	38	75	25	L	11.00
RSEEL1750	1 3/4" Grade L Eye & Eye Rigging Screw	1 3/4"	7.50	686.00	946	17	405	41	88	32	L	15.00
RSEEL2000	2" Grade L Eye & Eye Rigging Screw	2"	10.00	717.00	965	19	405	44	102	38	L	25.00
RSEEL2250	2 1/4" Grade L Eye & Eye Rigging Screw	2 1/4"	15.00	813.00	1016	22	405	60	130	41	L	30.00
RSEEL2500	2 1/2" Grade L Eye & Eye Rigging Screw	2 1/2"	20.00	813.00	1016	22	405	60	130	47	L	39.00

Items are batch tested only. For lifting applications an individual certificate of proof test must be supplied.

TOWNLEY
FORGING AUSTRALIAN QUALITY

Grade S Bow Shackles

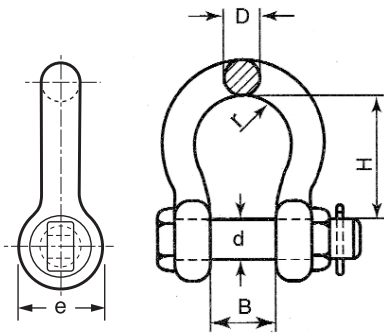


Grade S Anchor (Bow) Shackle AS2741.

High Tensile Steel body - alloy pin

For Lifting Purposes. Safety Factor 6 times W.L.L.

P/N	Size D	d	B	H	e	W.L.L. (T)
1476	5mm	6	10	22	14	0.33
1477	6mm	8	12	29	17	0.5
1478	8mm	10	13	31	21	0.75
1479	10mm	11	17	37	25	1
1480	11mm	13	18	43	27	1.5
1481	13mm	16	21	48	33	2
1482	16mm	19	27	61	40	3.2
1483	19mm	22	32	72	48	4.7
1484	22mm	25	37	84	54	6.5
1485	25mm	29	43	95	60	8.5
1486	29mm	32	46	108	67	9.5
1487	32mm	35	52	119	76	12
1488	35mm	38	57	133	84	13
1489	38mm	41	60	146	92	17



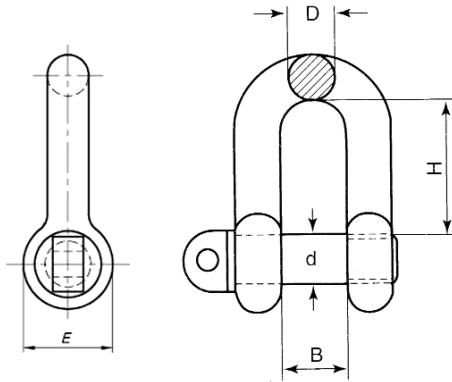
Grade S Safety Anchor (Bow) Shackle AS2741.

High Tensile Steel body - alloy pin

For Lifting Purposes. Safety Factor 6 times W.L.L.

P/N	Size D	d	B	H	e	W.L.L. (T)
1490	8mm	10	13	31	21	0.75
1491	10mm	11	17	37	25	1
1492	11mm	13	18	43	27	1.5
1493	13mm	16	21	48	33	2
1494	16mm	19	27	61	40	3.2
1495	19mm	22	32	72	48	4.7
1496	22mm	25	37	84	54	6.5
1497	25mm	29	43	95	60	8.5
1498	29mm	32	46	108	67	9.5
1499	32mm	35	52	119	76	12
1500	35mm	38	57	133	84	13
2393	38mm	41	60	146	92	17

D Shackles

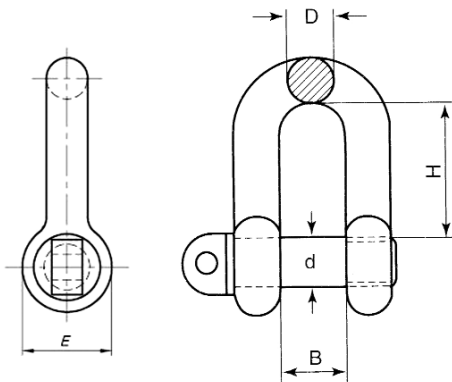


Grade M Dee Shackle to AS2741

High tensile steel.

For Lifting Purposes. Safety factor 6 times W.L.L.

P/N	Size D	d (pin)	B	H	e	WLL (T)
	6mm	10	13	25	19	0.25
2393	10mm	13	19	38	25	0.5
2394	13mm	16	28	54	32	.75
2395	16mm	19	32	63	38	1.5
2396	19mm	22	38	73	44	2
2397	22mm	25	44	83	51	3
2398	25mm	29	51	95	57	3.8

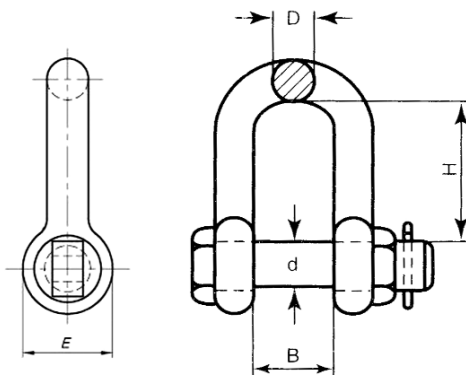


Grade S Dee Shackle to AS2741

High tensile steel body—alloy pin.

For Lifting purposes—Safety factor 6 times W.W.L.

P/N	Size D	d (pin)	B	H	E	W.L.L (T)
1941	6mm	8	12	22	17	0.5
1942	8mm	10	13	26	21	0.75
1943	10mm	11	17	32	25	1
1944	11mm	13	18	37	27	1.5
1945	13mm	16	21	41	33	2
1946	16mm	19	27	51	40	3.2
1947	19mm	22	32	60	48	4.7
1948	22mm	25	37	71	54	6.5
1949	25mm	29	43	81	60	8.5
1950	29mm	32	46	90	67	9.5
1951	32mm	35	52	100	76	12







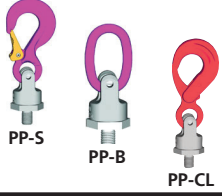
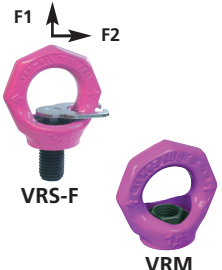
Grade S Safety Dee Shackle to AS2741

High tensile steel body - alloy pin.

For Lifting purposes - Safety factor 6 times W.L.L.








P/N	Size D	d (pin)	B	H	E	W.L.L. (T)
1952	13mm	16	21	41	33	2
1953	16mm	19	27	51	40	3.2
1954	19mm	22	32	60	48	4.7
1955	22mm	25	37	71	54	6.5
1956	25mm	29	43	81	60	8.5
1957	29mm	32	46	90	67	9.5
1958	32mm	35	52	100	76	12



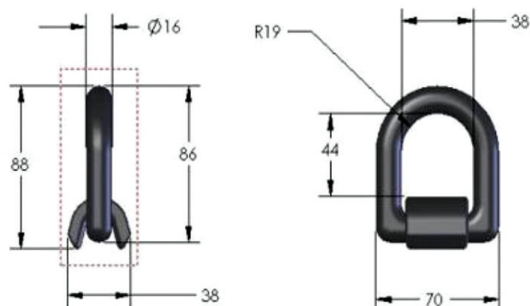
BOLT-ON TYPES		WORKING LOAD LIMITS (G - in tonnes)				
		Single Point	2, 3 or 4 Point			
						
PRODUCT DESCRIPTION		Vertical Lift	Maximum Included Angle (Degrees)			
			60°	90°	120°	
 VLBG RING-BOLT		0.30t M8	0.30	0.52	0.42	0.30
		0.63t M10	0.63	1.1	0.90	0.63
		1.0t M12	1.0	1.7	1.4	1.0
		1.5t M16	1.5	2.6	2.1	1.5
		2.5t M20	2.5	4.3	3.5	2.5
		4.0t M24	4.0	6.9	5.6	4.0
		5.0t M30	5.0	8.6	7.0	5.0
		7.0t M36	6.5	11.3	9.2	6.5
		8.0t M36	8.0	13.8	11.3	8.0
		10.0t M42	10.0	17.3	14.1	10.0
		15.0t M42	15.0	26.0	21.2	15.0
20.0t M48	20.0	34.6	28.2	20.0		
 WBG-V WBG		0.30t M8	0.30	0.52	0.42	0.30
		0.45t M10	0.45	0.78	0.63	0.45
		0.60t M12	0.60	1.0	0.84	0.60
		1.3t M16	1.3	2.2	1.8	1.3
		2.0t M20	2.0	3.4	2.8	2.0
		3.5t M24	3.5	6.0	4.9	3.5
		5.0t M30	5.0	8.6	7.0	5.0
		8t M36	8.0	13.8	11.3	8.0
		10t M42	10.0	17.3	14.1	10.0
		10t M48	10.0	17.3	14.1	10.0
		15t M56	15.0	26.0	21.2	15.0
15t M64	15.0	26.0	21.2	15.0		
POWERPOINT		Vertical Lift	60°	90°	120°	
 PP-S PP-B PP-CL		0.63t M12	0.63	1.1	0.90	0.63
		1.5t M16	1.5	2.6	2.1	1.5
		2.5t M20	2.5	4.3	3.5	2.5
		4.0t M24	4.0	6.9	5.6	4.0
		5.0t M30	5.0	8.6	7.0	5.0
		8.0t M36	8.0	13.8	11.3	8.0
STARPOINT		F1	F2	60°	90°	120°
 VRS-F VRM		1.0	0.40	0.70	0.60	0.40
		1.0	0.40	0.70	0.60	0.40
		2.0	0.80	1.4	1.0	0.80
		4.0	1.5	2.6	2.1	1.5
		6.0	2.3	3.9	3.2	2.3
		8.0	3.2	5.5	4.5	3.2
		12.0	4.5	7.8	6.3	4.5
		16.0	7.0	12.0	9.8	7.0
		24.0	9.0	15.6	12.6	9.0
		32.0	12.0	20.7	16.8	12.0





WELD-ON TYPES		WORKING LOAD LIMITS (G - in tonnes)			
		Single Point	2, 3 or 4 Point		
					
PRODUCT DESCRIPTION		Vertical Lift	Maximum Included Angle (Degrees)		
			60°	90°	120°
VLBS - 1.5		1.5	2.6	2.1	1.5
VLBS - 4		4.0	6.9	5.6	4.0
VLBS - 6.7		6.7	11.6	9.5	6.7
VLBS - 10		10.0	17.3	14.1	10.0
VLBS - 16		16.0	27.7	22.6	16.0
VRBS - 4		4.0	6.9	5.6	4.0
VRBS - 6.7		6.7	11.6	9.5	6.7
VRBS - 10		10.0	17.3	14.1	10.0
VRBS - 16		16.0	27.7	22.6	16.0
VRBS - 30		30.0	52.0	42.4	30.0
VRBS - 50		50.0	86.6	70.7	50.0
VRBK - 4		4.0	6.9	5.6	4.0
VRBK - 6.7		6.7	11.6	9.5	6.7
VRBK - 10		10.0	17.3	14.1	10.0
POWERPOINT - SWIVELLING		Vertical Lift	60°	90°	120°
WPP-S / WPP-B / WPP-CL		0.63	1.1	0.90	0.63
WPP-S / WPP-B / WPP-CL		1.5	2.6	2.1	1.5
WPP-S / WPP-B / WPP-CL		2.5	4.3	3.5	2.5
WPP-S / WPP-B / WPP-CL		4.0	6.9	5.6	4.0
WPP-S / WPP-B / WPP-CL		5.0	8.6	7.0	5.0
WPP-S / WPP-B / WPP-CL	8.0	13.8	11.3	8.0	
POWERPOINT - FIXED		Vertical Lift	60°	90°	120°
WPPH-S/WPPH-B/WPPH-CL		0.63	1.1	0.90	0.63
WPPH-S/WPPH-B/WPPH-CL		1.5	2.6	2.1	1.5
WPPH-S/WPPH-B/WPPH-CL		2.5	4.3	3.5	2.5
WPPH-S/WPPH-B/WPPH-CL		4.0	6.9	5.6	4.0
WPPH-S/WPPH-B/WPPH-CL		5.0	8.6	7.0	5.0
WPPH-S/WPPH-B/WPPH-CL	8.0	13.8	11.3	8.0	

Section 5



Enquire about one tonne weld-on lug





Rated Rigging Fittings

The following rated fittings are not to the Australian Standard and therefore are "NOT SUITABLE FOR LIFTING OR ALLIED APPLICATIONS" due to their design or their safety factor.

- If these components are being used for any load bearing, tensioning, suspension, or lifting application, or other purposes subject to control by statutory authorities/requirements, you the purchaser should seek professional advice from a qualified person/engineer regarding suitability, selection, use, working load limits and individual proof load testing etc. of these components.


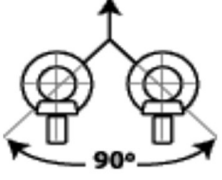
Eye Bolts

Eye Bolts -IS Range Working Load (Not for Lifting)

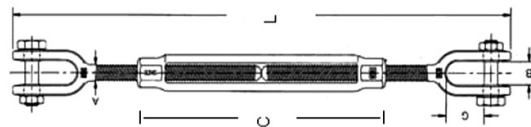
The following working loads are derived from DIN 580, which is used to determine the safe working load when used in the correct manner. However we do not recommend these for lifting purposes.

The Chart below is a guide only.



Imperial Nominal	Metric Nominal	WLL kg	
			
1/4"	n/a	n/a	n/a
5/16"	M8	n/a	n/a
3/8"	M10	200	170
1/2"	M12	250	240
5/8"	M16	600	500
3/4"	M20	1000	830
7/8"	M22	1500	1050
1"	M24	1800	1270

Super Buckle



Super Buckles Jaw & Jaw

****Not to any standard - Batch Tested only

****NOT APPROVED FOR LIFTING or any application requiring rated/tested fittings

P/N	Size	WLL (T)	L (opened)	L (closed)	C	B	G
	10mm 3/8"	0.6	440	290	150	13	22
0782	12mm 1/2"	0.99	508	330	150	13	22
0783	16mm 5/8"	1.59	715	454	228	21	33
0784	20mm 3/4"	2.36	765	498	305	24	38
2198	22mm 7/8"	3.27	965	618	305	28	45
0785	25mm 1"	4.5	1018	662	305	30	52

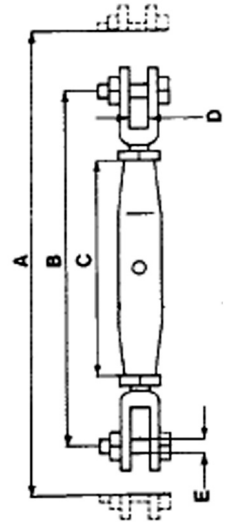


Rigging Screw

Rated Galvanised Jaw & Jaw Rigging Screw

****NOT APPROVED FOR LIFTING or any application requiring rated/tested fittings

P/N	Size		MWL (T)	A (opened)	B (closed)	C	D	E
n/a	5mm	3/16"	0.07	180	130	80	7	5
n/a	6mm	1/4"	0.2	225	160	100	7	5
0605	8mm	5/16"	0.32	260	182	110	9	6
0606	10mm	3/8"	0.5	295	205	125	10	8
0607	12mm	1/2"	0.7	465	315	195	13	10
0608	16mm	5/8"	1.2	550	380	230	17	12
0609	20mm	3/4"	1.5	670	460	270	20	16
0610	22mm	7/8"	2.2	745	515	295	25	20
0611	25mm	1"	3.2	820	565	325	28	22
0612	32mm	1 1/4"	4.8	975	685	370	38	28
0613	38mm	1 1/2"	6	1070	750	400	45	32
0614	44mm	1 3/4"	8.5	1070	750	400	48	38
0615	50mm	2"	11	1145	825	400	56	45

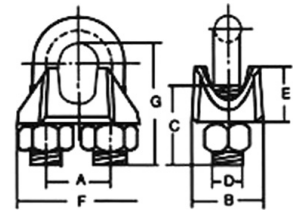


For applications requiring rated components, refer to relevant Australian Standard.

Wire Rope Grips

WARNING:

- Wire rope grips are not to be used for lifting/allied purposes as mentioned on the previous page of this section. They are not intended for the permanent fastening of a rope that is subject to high dynamic loading.
- If the wire rope grips are to be fitted to wire rope with a tensile strength/grade of wire higher than 1770 MPa IWRC (Independent wire rope core), the assembly may need to be derated or additional grips may be required. We suggest you seek independent professional advice in this regard.



Wire Rope Grips Australian Standard AS 2076

Not to be used for Lifting Purposes

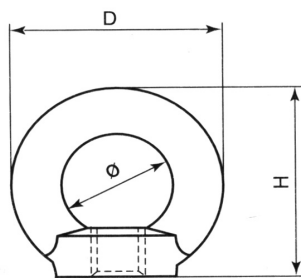
P/N	Rope	A mm	B mm	C mm	D mm	E mm	F mm	G mm
0743	6	TBA	TBA	TBA	M6	TBA	TBA	TBA
0744	8	18	19	22	M8	14	34	32
0745	10	22	23	27	M10	17	42	40
TBA	11	26	28	32	M12	20	50	48
0746	13	28	32	38	M14	22	52	52
0747	16	34	32	41	M14	26	66	64
0748	19	36	38	47	M16	27	68	68
0749	22	38	46	58	M20	30	72	76
0750	26	40	46	61	M20	32	72	92

*** Larger sizes available on request

Commercial Fittings

- Commercial Rigging Fittings are not rated and should not be used for any load bearing, tensioning, suspension, lifting application, or other purposes subject to control by statutory authorities/requirements.
- Should rated fittings be required for your application, please refer to our previous section on Rigging Fittings to the Australian Standard..

Eye Nuts



Commercial Eye Nut DIN 582 -

Electrogalvanised

Not for Lifting purposes

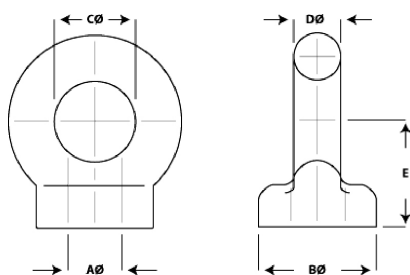
PN	Size	D	Ø	H
0787	6mm	36	20	36
0769	8mm	36	20	36
0770	10mm	45	25	45
0771	12mm	54	30	53
0772	16mm	63	35	62
0773	20mm	72	40	71
0774	24mm	90	50	90

Forged Eye Nuts Imperial BSW Thread

Not for Lifting purposes

PN	Imperial	BØ	C	DØ	E
1429	3/8"	28	24	11	25
1430	1/2"	28	24	11	25
1431	5/8"	34	28	16	40
1432	3/4"	44	32	20	44
1433	1"	57	38	22	51
1434	1 1/4"	71	48	28	65

Larger sizes available on request



Forged Eye Nuts Metric Coarse Thread

Not for Lifting purposes

PN	Metric	BØ	C	DØ	E
1405	M10	28	24	11	25
1406	M12	28	24	11	25
1407	M16	34	28	16	40
1408	M20	44	32	20	44
1409	M24	57	38	22	51
1410	M30	71	48	28	65

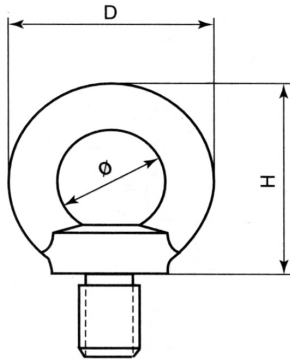
Larger sizes available on request

Eye Nuts

Note: There is currently no Australian Standard for Eye nuts



Eye Bolts



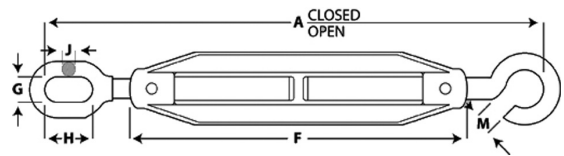
Commercial Eye Bolt DIN 580 -

Electrogalvanised

Not for Lifting purposes

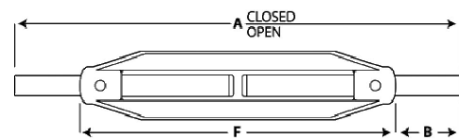
PN	Size	D	Ø	H
0775	6mm	36	20	36
0776	8mm	36	20	36
777	10mm	45	25	45
778	12mm	54	30	53
779	16mm	63	35	62
780	20mm	72	40	71
781	24mm	90	50	90

Turnbuckles



Hook & Eye Turnbuckles Galvanised - Heavy Duty

TDF Part No	Description	Nominal size	A		Cmm	Fmm	Gmm	Hmm	Jmm	Grade
			Closed	Open						
TBHE10	10mm Heavy Duty Hook & Eye Turnbuckle	M10	245.00	345	20	150	11	21	7	12
TBHE12	12mm Heavy Duty Hook & Eye Turnbuckle	M12	325.00	465	25	190.5	15	30	9	14
TBHE16	16mm Heavy Duty Hook & Eye Turnbuckle	M16	355.00	495	30	204	17	36	12	20
TBHE20	20mm Heavy Duty Hook & Eye Turnbuckle	M20	400.00	530	40	216.5	21	42	14	23
TBHE24	24mm Heavy Duty Hook & Eye Turnbuckle	M24	445.00	580	50	232	25	51	17	25



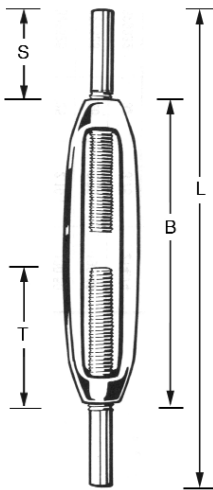
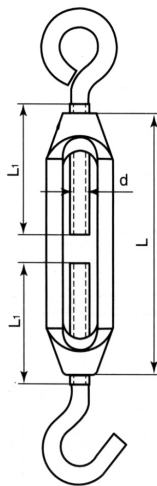
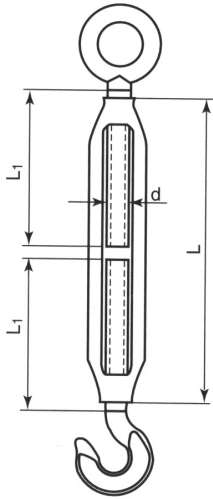
Stub & Stub Turnbuckles Galvanised - Heavy Duty

TDF Part No	Description	Nominal size	A		Bmm	Fmm
			Closed	Open		
TBSS10	10mm Heavy Duty Stub & Stub Turnbuckle	M10	265	375	55	150
TBSS12	12mm Heavy Duty Stub & Stub Turnbuckle	M12	335	475	70	191
TBSS16	16mm Heavy Duty Stub & Stub Turnbuckle	M16	365	495	72	204
TBSS20	20mm Heavy Duty Stub & Stub Turnbuckle	M20	365	500	79	217
TBSS24	24mm Heavy Duty Stub & Stub Turnbuckle	M24	400	535	89	232
TBSS1250	1 1/4" Heavy Duty Stub & Stub Turnbuckle	1 1/4"	415	565	70	255
TBSS1500	1 1/2" Heavy Duty Stub & Stub Turnbuckle	1 1/2"	600	740	160	275

TOWNLEY
FORGING AUSTRALIAN QUALITY



Turnbuckles



Commercial Galvanised Forged Turnbuckle

Hook & Eye / Eye & Eye

Hook/Eye	Eye/Eye	Size	L	L1	d
0675	0684	5mm			
0676	0685	6mm	100	48	M6
0677	0686	8mm	125	58	M8
0678	0687	10mm	150	70	M10
0679	0688	12mm	200	95	M12
0680	0689	16x250mm	250	120	M16
0681	0690	20x300mm	300	140	M20
0683	0692	24x350mm	350	190	M24

Commercial Zinc Alloy Cast Turnbuckle

Hook & Eye / Eye & Eye

Hook/Eye	Eye/Eye	Size	L	L1	d
0671	0667	5mm (3/16")	56	28	5mm (3/16")
0672	0668	6mm (1/4")	78	40	6mm (1/4")
0673	0669	8mm (5/16")	92	48	8mm (5/16")
0674	0670	10mm (3/8")	103	55	10mm (3/8")

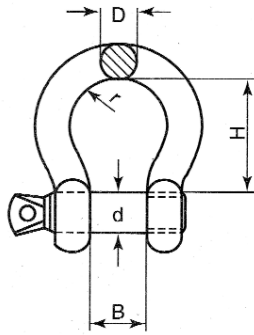
Commercial Galvanised Forged Turnbuckle

Stub & Stub

P/N	Size	B	T	S	L
1311	8mm	125	65	35	195
1312	10mm	150	75	55	260
2575	12mm	200	100	50	300
1313	13mm	***	***	***	***
1314	16mm	250	125	55	360
1315	20mm	300	150	70	440
1316	22mm	330	165	85	500
1317	25mm	350	175	95	540
1763	32mm	400	200	100	600



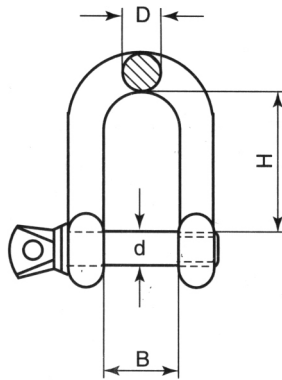
Shackles



Commercial Galvanised Anchor (Bow) Shackle.

Not to be used for Lifting Purposes

P/N	Size D	d	B	H	2r
752	6mm	6	12	24	18
753	8mm	8	16	32	24
754	10mm	10	20	40	30
755	12mm	12	25	49	36
756	16mm	16	32	64	48
757	20mm	20	38	80	60
759	25mm	25	50	100	75

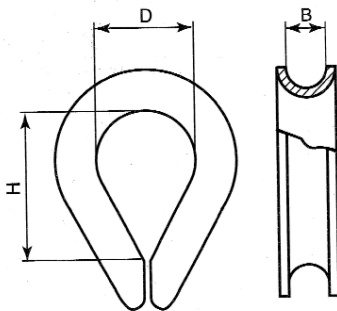


Commercial Galvanised Dee Shackle

Not to be used for Lifting purposes

P/N	Size D	d	B	H
0760	5mm	5	10	19
0761	6mm	6	12	24
0762	8mm	8	16	32
0763	10mm	10	20	40
0764	12mm	12	25	48
0765	16mm	16	32	64
0766	20mm	20	38	76
0768	25mm	25	50	95

Thimbles



Commercial Wire Rope Thimbles - Z/P

Not to be used for Lifting Purposes

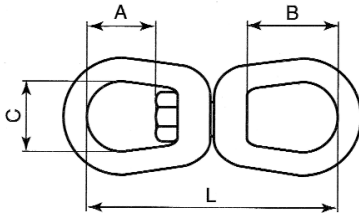
Part No	Size	B	H	D
0693	3mm	4.0	21	13
0694	4mm	5.0	23	14
0695	5mm	6.0	25	16
0696	6mm	7.0	28	18
0697	8mm	10.0	38	24
0698	10/11mm	12.0	45	28
0699	12mm	13.0	48	30
0700	16mm	18.0	64	40
0701	20mm	22.0	80	50
0702	22mm	24.0	90	56
0703	24mm	26.0	99	62

Commercial Wire Rope Thimbles - Galvanised

Not to be used for Lifting Purposes

Part No	Size
0693G	3mm
0694G	4mm
0695G	5mm

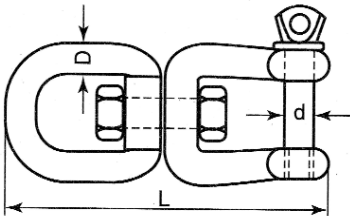
Swivels



Commercial Swivel Eye/Eye - Galvanised

Not for lifting applications

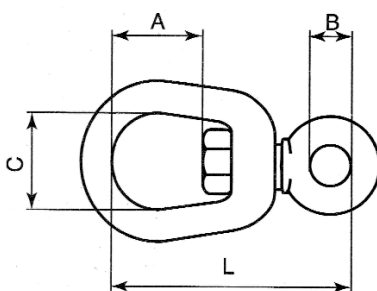
P/N	Size
0646	6mm
0647	8mm
0648	10mm
0649	12mm
0650	16mm
0651	20mm
0652	24mm



Commercial Swivel Jaw/Eye - Galvanised

Not for lifting applications

P/N	Size
0660	J/E 6mm
0661	J/E 8mm
0662	J/E 10mm
0663	J/E 12mm
0664	J/E 16mm
0665	J/E 20mm
0666	J/E 24mm



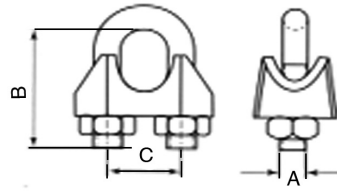
Mooring Swivel

Not for lifting applications

P/N	Size
0653	6mm
0654	8mm
0655	10mm
0656	12mm
0657	16mm
0658	20mm
2560	22mm
0659	24mm



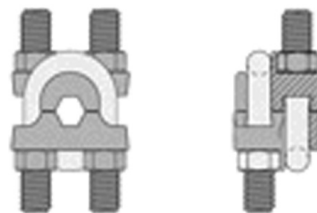
Wire Rope Grips



Wire Rope Grips Commercial - Electrogalvanised

Not to be used for Lifting Purposes

P/N	Size	C	B	A
0731	3-4mm (1/8")	11	20	M5
0733	5mm (3/16")	14	24	M6
0734	6mm (1/4")	17	31	M8
0735	8mm (5/16")	18	34	M8
0736	10mm (3/8")	22	41	M10
0737	12mm (1/2")	27	53	M12
0738	16mm (5/8")	33	59	M14
0739	20mm (3/4")	34	68	M14
0740	22mm (7/8")	41	78	M16
0741	24mm (1")	45	87	M16



Wire Rope Grips Double Throated Galvanised

Not to be used for Lifting Purposes

P/N	Rope Diam	Width	Bearing Surface	Diam of U bolt
0267	8-9mm	46mm	40mm	8mm
0266	10-12mm	52mm	40mm	10mm
0269	16mm	58mm	46mm	10mm

WARNING:

- Wire rope grips are not to be used for lifting/allied purposes. They are not intended for the permanent fastening of a rope that is subject to high dynamic loading.
- If the wire rope grips are to be fitted to wire rope with a tensile strength/grade of wire higher than 1770 MPa IWRC (Independent wire rope core), the assembly may need to be derated or additional grips may be required. We suggest you seek independent professional advice in this regard.

