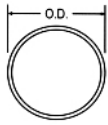


STAINLESS STEEL HANDRAIL FITTINGS

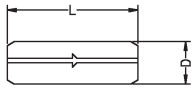


Round Tube Handrail System

Round Stainless Steel Welded Tube AISI 316 ASTM A554

Available in 320 grit and 600 grit polish—please specify when ordering
(M denotes high polish 600g finish)

P/N	O.D.	Wall	Finish	Length
2679/M	1 1/2"	1.6mm	320/600g	6m
2684/M	2"	1.6mm	320/600g	6m



Round Handrail Fittings - Satin Finish

Tube Joint G304

P/N SIZE L (mm) D (mm)

3000	1/12"	114	35
3001	2"	148	48

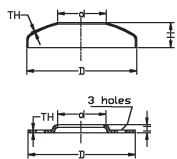
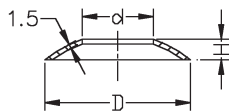


Plate and Cover Set - Weld On

(Cover G316, Base Plate G304 - Sold as a set or separately)

P/N Size Base Cover

P/N	Size	Base		Cover		Base		Cover	
		D(mm)	d(mm)	H(mm)	TH(mm)	D(mm)	d(mm)	H(mm)	TH(mm)
3002	1/2"	65	13	6	2	67	13	15	1
3003	3/4"	65	19	5.5	2	67	19	15	1
3004	1"	65	25	5.5	2	67	25	15	1
3005	1 1/4"	80	32	6.5	2	82	32	17	1
3006	1 1/2"	80	38	6	2	82	38	17	1
3007	2"	100	51	8	3	102	51	25	1
3008	2 1/2"	115	63.5	8	3	117	63.5	28	1
3009	3"	115	76	6	6	117	76	27	1



Tube Cover G316

P/N SIZE D (mm) d (mm) H (mm) TH (mm)

3010	3" - 1 1/2"	79	38	7	1.5
3011	4" - 2"	101	52	9	1.5



Long Flange (Cast) - Weld On G316

P/N SIZE D1 (mm) D2 (mm) W (mm) L (mm) H (mm) h (mm)

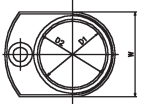
3012	2" (51mm)	54	51	64	103	13	8
------	-----------	----	----	----	-----	----	---



Short Flange (Cast) - Weld On G316

P/N SIZE D1 (mm) D2 (mm) W (mm) L (mm) H (mm) h (mm)

3013	2" (51mm)	54	51	64	84	13	8
------	-----------	----	----	----	----	----	---



Push End Cap (Cast) G316

P/N SIZE D (mm) d (mm) H (mm) L (mm)

3014	1 1/4" (32mm)	32	29	18	12.5
3015	1 1/2" (38mm)	38	35	15	10
3016	2" (51mm)	51	48	16	10
3017	2 1/2" (63mm)	63	60	20	12
3018	3" (76mm)	76	73	27	16

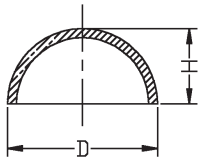
We have the right product, at the right price, when you need it, on-time, every time

Interstate callers **1800 067 687**

info@kebletrading.com.au

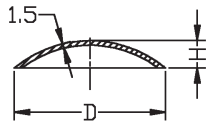
www.kebletrading.com.au

Dome End Cap- Weld On G316



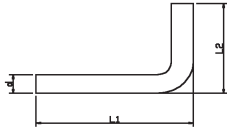
P/N	SIZE	D(mm)	H(mm)	TH(mm)
3019	3/4" (19mm)	19	10	1.5
3020	1" (25mm)	25	13	1.5
3021	1 1/4" (32mm)	32	16	1.5
3022	1 1/2" (38mm)	38	20	1.5
3023	2" (51mm)	51	25	1.5
3024	2 1/2" (63mm)	63	32	1.5
3025	3" (76mm)	76	38	1.5
3026	4" (101mm)	101	51	1.5
3048	5" (127mm)	127	64	1.5

Curved Tube Cap – Weld On G316



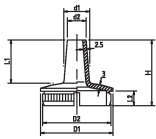
P/N	SIZE	D(mm)	H(mm)	TH(mm)
3027	1 1/2" (38mm)	38	7	1.5
3028	2" (51mm)	51	9	1.5
3029	2 1/2" (63mm)	63	10.5	1.5
3030	3" (76mm)	76	11.5	1.5
3031	4" (101mm)	101	12.5	1.5

L Bar – Weld On G316



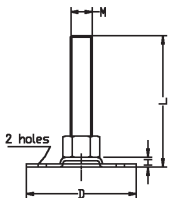
P/N	SIZE	L1 (mm)	L2(mm)	d (mm)
3034	12mm	86	57	12

Railing Converter G316



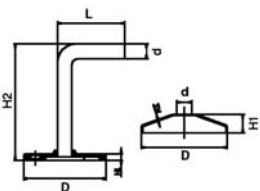
P/N	SIZE	D1 (mm)	D2 (mm)	d1 (mm)	d2 (mm)	L1 (mm)	L2 (mm)	H (mm)
3035	2" (51mm)	50.8	47.8	18	13	45	10	62
3049	1 3/4" (38mm)	38.1	35	15	10	35	10	50

Bolt Down Adjustable Foot G304



P/N	Size	D(mm)	M(mm)	H(mm)	L(mm)
3036	M10x50	55	10	15	60
3037	M12x50	65	12	18	68
3038	M16x60	80	16	22	84

Wall Bracket and Cover – Weld On G316 (Wall Bracket)

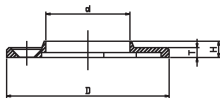


P/N	Size	D(mm)	d(mm)	H1(mm)	H2(mm)	L(mm)
3056	12mm	70	12	6	90	56
3056M						Mirror Finish

(Cover)

P/N	Size	D(mm)	d(mm)	H1(mm)	H2(mm)	L(mm)
3057	12mm	70	12	6	90	56
3057M						Mirror Finish

Flange – Weld On G316

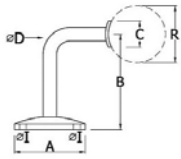


P/N	Size	D(mm)	d(mm)	H(mm)	T(mm)	
3058	2"	99	51.8	10	7	
3058M						Mirror Finish

Round Handrail Fittings AISI 316 "Mirror Finish"

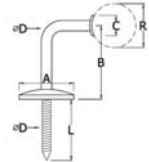
Full range also available to suit 1 1/2" tube

Wall-Mount Handrail Supports



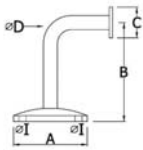
Handrail Support "Radiused"

P/N	A	B	C	D	I	R
3520	63	85	31	12	6	2"



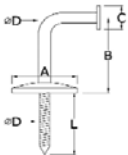
Handrail Support with Coach Screw "Radiused"

P/N	A	B	C	D	L	R
3521	63	85	31	12	60	2"



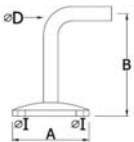
Handrail Support "Flat Base"

P/N	A	B	C	D	I
3522	63	85	31	12	6



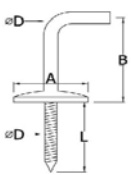
Handrail support with Coach Screw "Flat Base"

P/N	A	B	C	D	L
3523	63	85	31	12	60



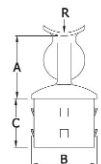
Handrail Support without Radiused Top

P/N	A	B	D	I
3530	63	85	12	6



Handrail Support with Coach Screw without Radiused Top

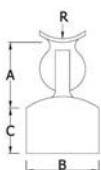
P/N	A	B	D	L
3531	63	85	12	60



Post-Mount Handrail Supports

Adjustable Rail Support Radiused "Internal Fit"

P/N	Tube	Wall	A	B	C	R
3519	2"	1.5	51	50.8	32	2"



Adjustable Rail Support Radiused "External Fit"

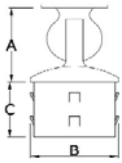
P/N	Tube	Wall	A	B	C	R
3527	2"	1.5	51	50.8	32	2"

We have the right product, at the right price, when you need it, on-time, every time

Interstate callers **1800 067 687**

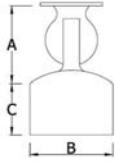
info@keblestrading.com.au

www.keblestrading.com.au



Adjustable Rail Support Flat Base "Internal Fit"

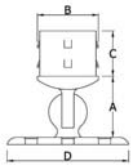
P/N	Tube	Wall	A	B	C
3517	2"	1.5	51	50.8	32



Adjustable Rail Support Flat Base "External Fit"

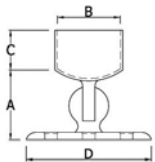
P/N	Tube	Wall	A	B	C
3516	2"	1.5	51	50.8	32

Adjustable Base Supports



Adjustable Rail Support Round Base "Internal Fit"

P/N	Tube	Wall	A	B	C	D
3532	2"	1.5	51	50.8	26	101



Adjustable Rail Support Round Base "External Fit"

P/N	Tube	Wall	A	B	C	D
3533	2"	1.5	51	50.8	26	101

Plates and Flanges

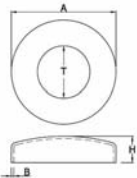


Round Base Plate with Cover (Welded)

(Cover G316, Base Plate G304)

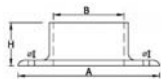
P/N	Tube
6319	2"

Available in satin and mirror finish



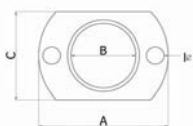
Round Cover Plate only

P/N	Tube	A	B	H	I
3006CM	1 1/2"	82	0.8	17	38.4
3007CM	2"	102	0.8	26	51.2



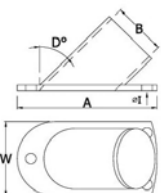
Round Flange

P/N	Tube	A	B	H	I
3509	2"	102	50.8	31	9



Oblong Flange

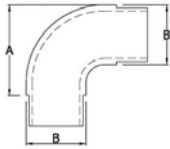
P/N	Tube	A	B	C	I
3508	2"	100	50.8	69	9



Wall Stop Flange

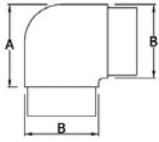
P/N	Tube	D	A	B	W	I
3510	2"	45	130	50.8	70	7
3526	2"	37	110	50.8	70	6

Flush Joiners



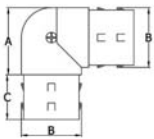
Flush Joiner "90°" Radiused

P/N	Tube	Wall	A	B
3512	2"	1.5	66	50.8



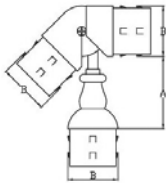
Flush Joiner "90°"

P/N	Tube	Wall	A	B
3502	2"	1.5	57	50.8



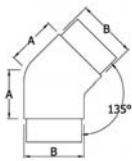
Flush Joiner "Adjustable"

P/N	Tube	Wall	A	B	C
3524	2"	1.5	57	50.8	38



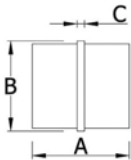
Flush Joiner 3-Way "Adjustable"

P/N	Tube	Wall	A	B
3535	2"	1.5	73	50.8



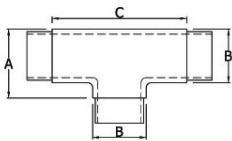
Flush Joiner "135°"

P/N	Tube	Wall	A	B
3501	2"	1.5	45	50.8



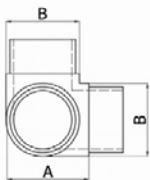
Flush Joiner "In-line"

P/N	Tube	Wall	A	B	C
3500	2"	1.5	54	50.8	3



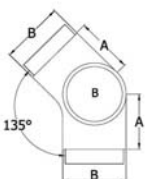
Flush Joiner "Tee"

P/N	Tube	Wall	A	B	C
3503	2"	1.5	57	50.8	67



Flush Joiner "90° Tee"

P/N	Tube	Wall	A	B
3504	2"	1.5	57	50.8



Flush Joiner "135°"

P/N	Tube	Wall	A	B
3505	2"	1.5	45	50.8

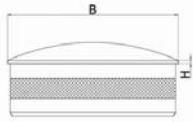
We have the right product, at the right price, when you need it, on-time, every time

Interstate callers **1800 067 687**

info@keblestrading.com.au

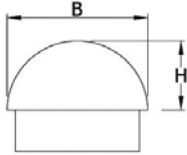
www.keblestrading.com.au

End Caps



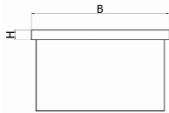
End Cap "Self Grip"

P/N	Tube	Wall	B	H
3015	1 1/2"	1.5	38.1	2.5
3016	2"	1.5	50.8	2.5



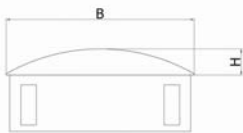
End Cap Dome

P/N	Tube	Wall	B	H
3525	2"	1.5	50.8	50.8



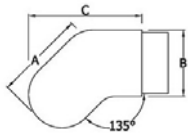
End Cap "Flat"

P/N	Tube	Wall	B	H
3506	2"	1.5	50.8	4



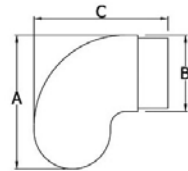
End Cap "Light Knock In"

P/N	Tube	Wall	B	H
3507	2"	1.5	50.8	8



Handrail End "45°"

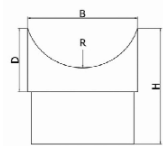
P/N	Tube	Wall	A	B	C
3513	2"	1.5	70	50.8	70



Handrail End "90°"

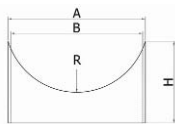
P/N	Tube	Wall	A	B	C
3514	2"	1.5	89	50.8	89

Perpendicular Joiners



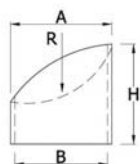
Perpendicular Joiner "Flush Fitting"

P/N	Tube	Wall	B	D	H	R
3411	1 1/2"	1.5	38.1	15	41	1 1/2"
3611	1 1/2"	1.5	38.1	15	41	2"
3511	2"	1.5	50.8	32	57	2"



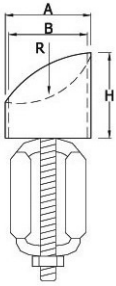
Perpendicular Joiner "External Cap"

P/N	Tube	A	B	H	R
3528	2"	55	51.5	39	2"



Perpendicular Joiner "37° Cap"

P/N	Tube	A	B	H	R
3515	2"	50.8	51.4	56	2"



Perpendicular Joiner Expanding "37° External Cap"

P/N	Tube	A	B	H	R
3518	2"	56	51.4	56	2"



Handrail Return 180° G316L

P/N	Tube	Finish
6281M	2"x1.6MM	Mirror



Domed Rail Support Cap

P/No	Size
6242	50.8 x 1.6MM wall



Rail Support Fixed

P/No	Bar Diam	Length	Female Thread	Male Thread
6244	14MM	40MM	M6	M8



Rail Support Adjustable

P/No	Bar Diam	Length	Female Thread	Male Thread
6245	14MM	40MM	M6	M8



Rail Support Plate Flat

P/No	Size
6246	N/A



Rail Support Plate Curved

P/No	Size
6247	50.8MM



Rail Support Plate 90 degree Curved

P/No	Size
6316	50.8MM



Countersunk Socket Screw

P/No	Size
6248	M6 x 10MM

Dropper Fittings AISI 316



Dropper Fitting Curved

P/No.	Size
2667A	38MM
2681A	50MM



Dropper Fitting Flat

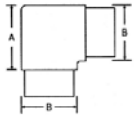
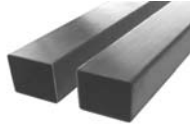
P/No.	Size
2668A	38/50MM

Square Handrail Fittings AISI 316

Available in Satin (180g) and Highly Polished (600g) finish
 –please specify when ordering (M denotes high polish 600g finish)

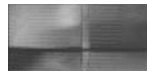
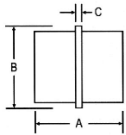
Square Stainless Steel Welded Tube AISI 316 ASTM A554

P/N	O.D.	Wall	Finish	Length
3562M	2"	1.5mm	180/600g	6m



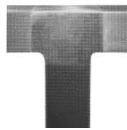
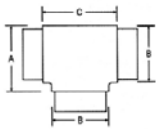
Flush Joiner "90°"

P/N	Tube	Wall	A	B
3550	2"	1.5mm	63	50.8



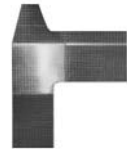
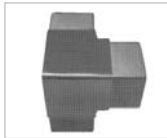
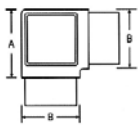
Flush Joiner "In-Line"

P/N	Tube	Wall	A	B	C
3551	2"	1.5mm	66	50.8	6



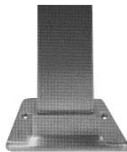
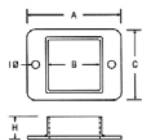
Flush Joiner "Tee"

P/N	Tube	Wall	A	B	C
3552	2"	1.5mm	63	50.8	75



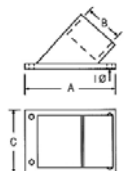
Flush Joiner "90° Tee"

P/N	Tube	Wall	A	B
3553	2"	1.5mm	63	50.8



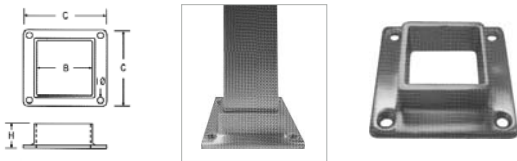
Oblong Flange

P/N	Tube	Wall	A	B	C	H	I
3554	2"	1.5mm	116	50.8	80	30	8



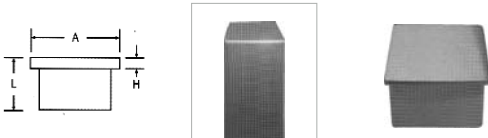
Wall Stop Flange "37°"

P/N	Tube	Wall	A	B	C	I
3555	2"	1.5mm	155	51.5	80	8



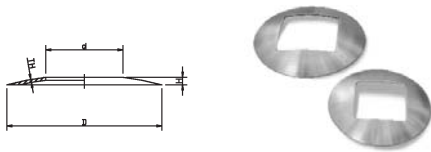
Base Plate Flange

P/N	Tube	Wall	A	B	C	H	I
3556	2"	1.5mm	100	50.8	100	30	8



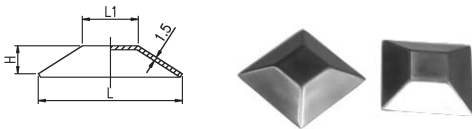
End Cap "Flat"

P/N	Tube	Wall	A	H	L
3557	2"	1.5mm	50.8	3	33



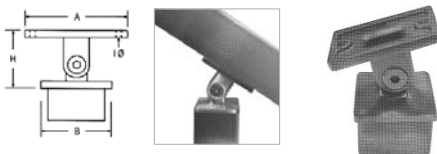
Square Tube Cover G316

P/N	SIZE	D (mm)	d (mm)	H (mm)	TH (mm)
3032	3" - 1 ¹ / ₂ "	76.2	38.2x38.2	7	1.2
3033	4" - 2"	102	51.5x51.5	9.5	1.5



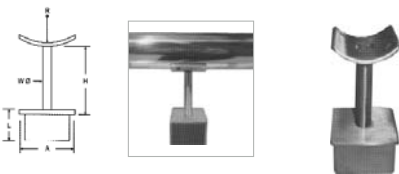
Square Tube Cap - Weld On G316

P/N	SIZE	L (mm)	L1 (mm)	H (mm)	TH (mm)
3055	2"	51.5	20	10	1.5



Adjustable Rail Support "Flat Top"

P/N	Tube	Wall	A	B	H	I
3558	2"	1.5mm	66	50.8	50	6



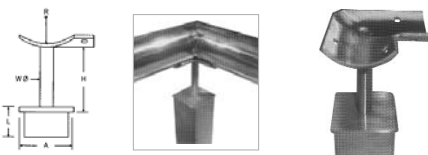
Post Reducer Square - Round "In-Line"

P/N	Tube	Wall	A	H	L	R	W
3559	2"	1.5mm	50.8	66	33	2"	12



Post Reducer Square - Round "Adjustable"

P/N	Tube	Wall	A	H	L	R	W
3560	2"	1.5mm	50.8	66	33	2"	16



Post Reducer Square - Round "90° Corner"

P/N	Tube	Wall	A	H	L	R	W
3561	2"	1.5mm	50.8	66	33	2"	12

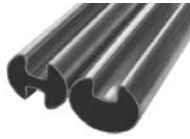
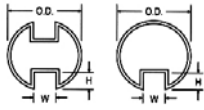
We have the right product, at the right price, when you need it, on-time, every time

Interstate callers **1800 067 687**

info@keblestrading.com.au

www.keblestrading.com.au

Slotted Tube/Glass Handrail System AISI 316



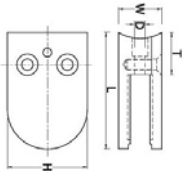
Round Slotted Stainless Steel Welded Tube AISI 316 ASTM A554

P/N	O.D.	Wall	Finish	W	H	Slot	Length
3563	2"	1.5mm	600g	15	15	Single	6m
3564	2"	1.5mm	600g	15	15	Double	6m



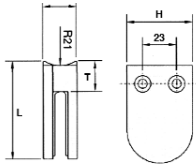
Exciting new range of fittings!
Further details available on request

Glass Clamps



Glass Clamp Medium "D" Type G316

P/N	Glass	Post	Finish	H	L	W	T	D
6131	6,8,10,12mm	Square/Flat	Satin	45	63	30	16	9
6131M	6,8,10,12mm	Square/Flat	Mirror	45	63	30	16	9
6132	6,8,10,12mm	2" Round	Satin	45	63	30	16	9
6132M	6,8,10,12mm	2" Round	Mirror	45	63	30	16	9

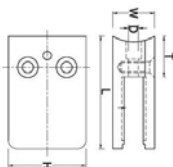


Glass Clamp Zinc Alloy

P/N	Glass	Post	Finish	H	L	W	T
2688	6, 8, 10mm	2" Round	Satin Chrome plated	44	66	27	17.5
2693	6, 8, 10mm	Square/Flat	Satin Chrome plated	44	62	27	17.5

Rubber Gaskets for "D" Type Glass Clamps

P/N	Glass
6131-G-06	6mm
6131-G-08	8mm
6131-G-10	10mm
6131-G-12	12mm



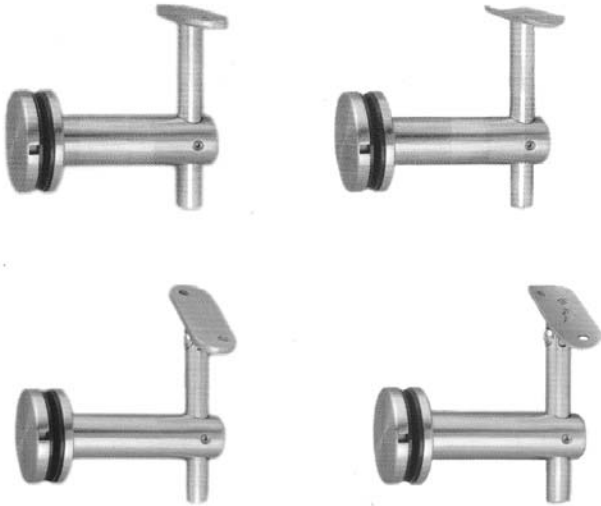
Glass Clamp Large Square Type G316

P/N	Glass	Post	Finish	H	L	W	T	D
6225	8, 10, 12mm	Square/Flat	Satin	55	55	32	16	9
6225M	8, 10, 12mm	Square/Flat	Mirror	55	55	32	16	9
6224	8, 10, 12mm	2" Round	Satin	55	55	32	16	9
6224M	8, 10, 12mm	2" Round	Mirror	55	55	32	16	9

Rubber Gaskets for Square Type Glass Clamps

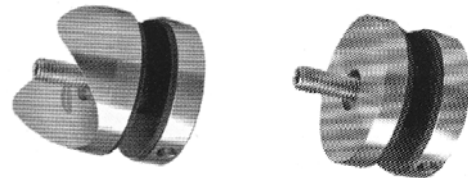
P/N	Glass
6224-G-08	8mm
6224-G-10	10mm
6224-G-12	12mm





Glass Mount Handrail Brackets

– available in fixed bar and adjustable types



Glass Adaptors - Flat and Curved.

Available in 30mm OD and 50mm OD
Other sizes available on request



Glass Mount Spigots

- Core drill
- Surface mount
- Grade 316 Marine Grade Stainless Steel
- Satin and mirror finish

Stainless Steel Information

1. It is an often held belief that stainless steel is "maintenance free". This however is not necessarily correct. All grades of stainless steel are susceptible to some form of staining or discolouration and periodic cleaning is required.
2. Stainless steel, if not properly maintained will discolour via a process called tea staining.
3. The staining rate and the required maintenance of stainless steel is relative to its environment, surface finish, design, grade of material and exposure.
4. For example,
 - a. An outside balustrade installation along Melbourne's Bayside or Coastal Areas would experience a faster rate of tea staining due to the environmental conditions and would therefore require more frequent maintenance than an indoor stairway balustrade installed in an inner Melbourne suburb of say - Blackburn.
 - b. Due to the relative smoothness of the surface finish, a stainless steel component with a satin finish will display signs of tea staining much sooner than a highly polished component of the same grade.
 - c. Designs that incorporate poor run off (rain water / washing water / etc) provide areas for stagnant water to collect which may increase the likelihood of tea staining.
5. We therefore suggest that you enquire about appropriate products available for the cleaning and maintenance of stainless steel.

Disclaimer

1. The above information is only given as a guide or general information. If the information given is insufficient, or if you are not satisfied, or certain, we suggest you seek further advice from a professional metallurgist.
2. For safety, structural and strategic applications, independent engineering or specialist advice should be sought from the relevant authorities/experts. Based on this advice, our sales consultants can assist with the supply of rated fittings for these applications as recommended/nominated by your professional, qualified engineer. Under no circumstances is Keble's Trading Pty Ltd or its staff authorized or qualified to make any recommendations whatsoever regarding design or selection of fittings for such applications.
3. Keble's Trading makes no recommendations or claims for the performance and mechanical properties of Stainless Steel and accepts no responsibility or liability whatsoever for any unsatisfactory outcome, unsuitable application or installation of these products.
4. Keble's Trading Pty Ltd makes no recommendations and takes no responsibility for the use of any fastening system or products used in the installation of any Balustrading and Handrail components. The responsibility of the design and choice of fastener for compliance to Aust Standard and relevant codes lies solely with the purchaser. Please consult appropriate authorities and or the advice of professional persons for information on correct design and installation techniques.
5. Every effort has been made to ensure that all information contained in this brochure is correct at time of printing. We strongly advise that you check all items with our sales staff at the time of ordering as changes may occur without prior notice.


We have the right product, at the right price, when you need it, on-time, every time


Interstate callers **1800 067 687**


info@keblestrading.com.au


www.keblestrading.com.au


Stainless Steel - Wire balustrade infill configurations


- 1** 


2 Saddle Anchors 5mm, 1 Jaw/Jaw Bottlescrew Tensioner M5, 2 Swaged Thimbled Eyes 3mm. Use with screws or pop rivets.
- 2** 


2 Saddle Anchors 5mm, 1 Eye/Eye Turnbuckle Tensioner M5, 2 Swaged Thimbled Eyes 3mm. Use with screws or pop rivets.
- 3** 


2 Screw Eye Anchors (Suitable for timber posts), 1 Jaw/Jaw Bottlescrew Tensioner M5, 2 Swaged Thimbled Eyes 3mm.
- 4** 


1 Button Head Socket Screw, 1 Internal Threaded Terminal M5, 1 Dome terminal 1/8". (Recommended for steel posts only)
- 5** 


1 Hex Tensioner M6, 1 Swage Stud 1/8" x M6, 1 Dome Terminal 1/8". (Recommended for steel posts only)
- 6** 

1 Hex Nut, 2 Swage Studs 1/8" x M5, 1 Dome Nut. (Choice of Dome or Hex nut)
- 7** 

1 Swage Stud Lag Screw 1/8" LHT, 1 Swage Stud Lag Screw 1/8" RHT. (Suitable for timber posts only)
- 8** 

2 Screw Eye Anchors (Suitable for timber posts), 1 Mini Jaw/Tube Bottlescrew Tensioner, 1 Mini Fork Terminal.
- 9** 

2 Saddle Anchors 5mm, 1 Jaw/Tube Bottlescrew Tensioner M5, 1 Fork Terminal 5mm pin. Use with screws or pop rivets.
- 10** 

2 Nutserts 6mm, 2 Micro Screw Eye Bolts 6mm, 1 Jaw/Tube Bottlescrew Tensioner M5, 1 Fork Terminal 5mm pin. (Recommended for steel posts only)
- 11** 

2 Screw Eye Anchors (Suitable for timber posts), 1 Jaw/Tube Bottlescrew Tensioner M5, 1 Fork Terminal 5mm pin.

Suitable for 7 X 7 wire

This group recommended for use over short spans

Suitable for 1 x 19 wire